



Land Use District

Crown Land (C)	Highway Development (HD)	Hamlet General (HG)
Agricultural (AG)	Rural Industrial (RI)	Direct Control 1 (DC-1)
Joint Plan Agricultural (JPAG)	Rural Industrial: Gravel Pit (RI-GP)	Direct Control 2 (DC-2)
Country Residential (CR)	Rural Industrial: Petroleum Facility (RI-PF)	Highway Commercial (HC)
Country Residential Hobby Farm (CR-2)	Rural Industrial: Shaftesbury Trail Gravel Pit (RI-SG)	Service Commercial (SC)
	Commercial - Industrial (CI)	



Municipal District of Peace No. 135 Land Use Bylaw No. 1/2012

Land Use Bylaw Detail Map 1



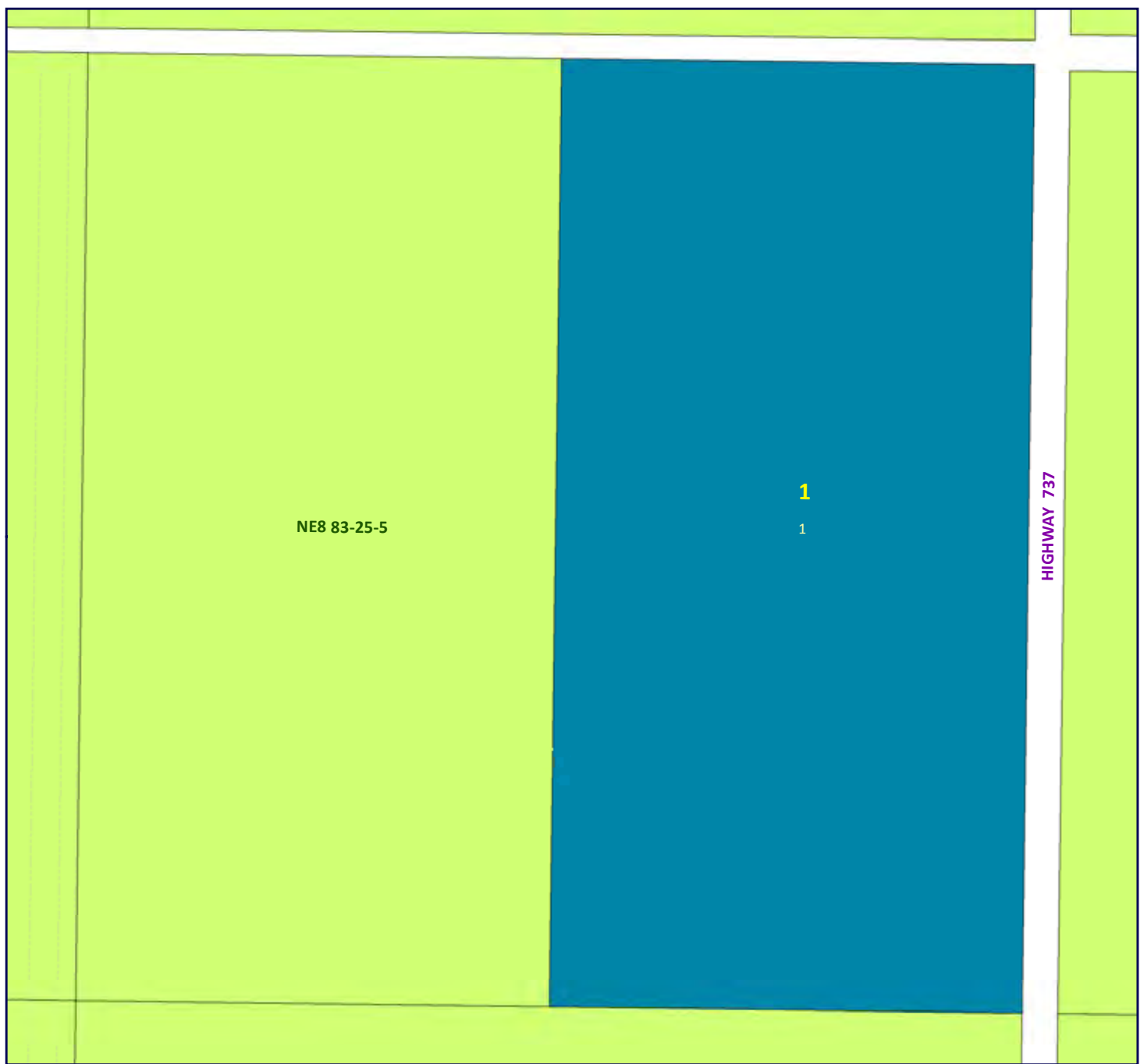
100 50 0 100 200

Metres

1 cm = 55 metres

Adopted on: May 8, 2012
Updated and Printed: Oct 2016





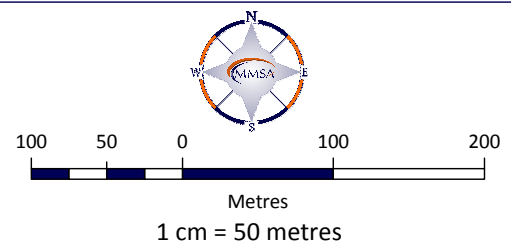
Land Use District

Crown Land (C)	Highway Development (HD)	Hamlet General (HG)
Agricultural (AG)	Rural Industrial (RI)	Direct Control 1 (DC-1)
Joint Plan Agricultural (JPAG)	Rural Industrial: Gravel Pit (RI-GP)	Direct Control 2 (DC-2)
Country Residential (CR)	Rural Industrial: Petroleum Facility (RI-PF)	Highway Commercial (HC)
Country Residential Hobby Farm (CR-2)	Rural Industrial: Shaftesbury Trail Gravel Pit (RI-SG)	Service Commercial (SC)
	Commercial - Industrial (CI)	



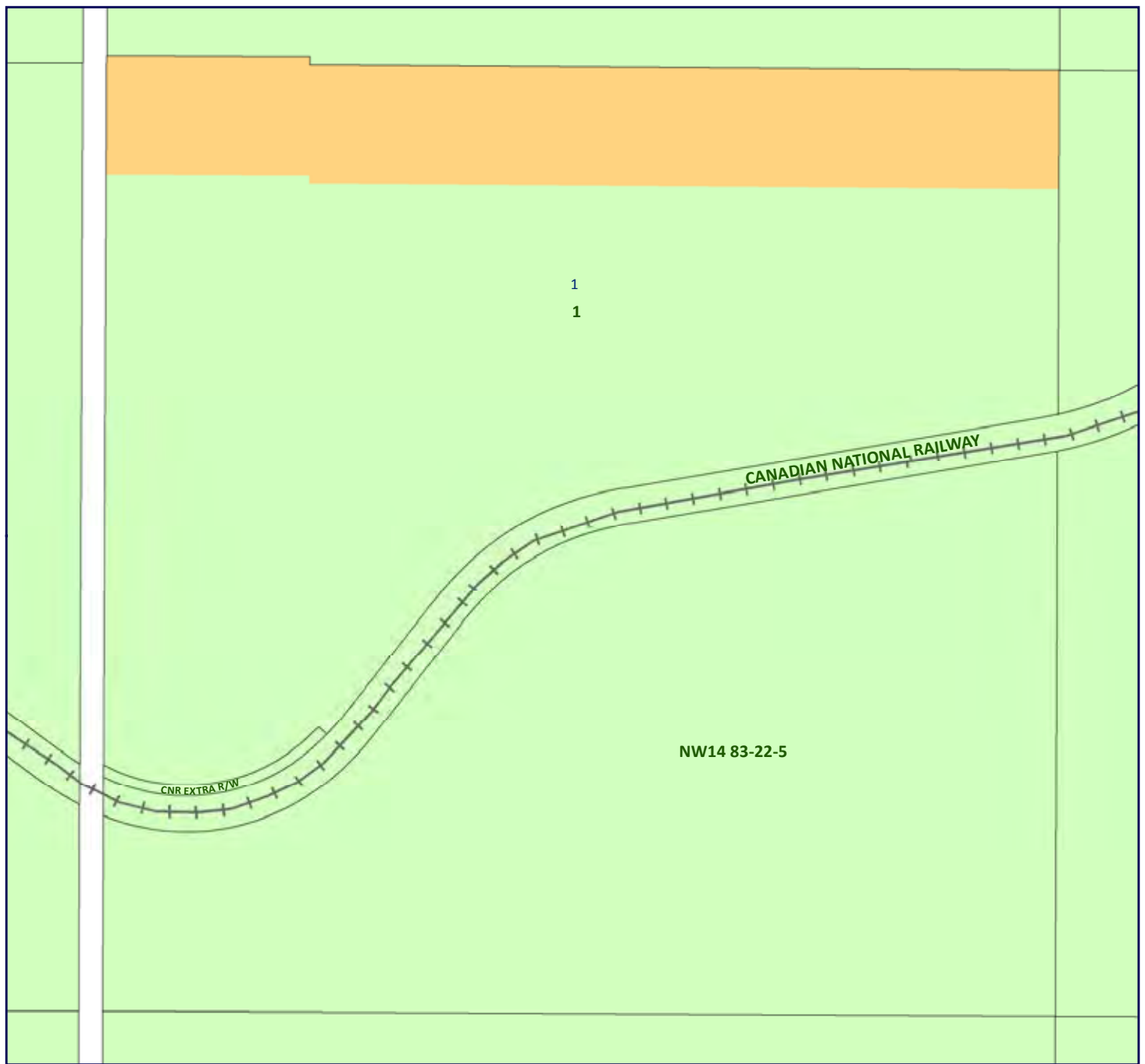
Municipal District of Peace No. 135 Land Use Bylaw No. 1/2012

Land Use Bylaw Detail Map 2



Adopted on: May 8, 2012
Updated and Printed: Oct 2016





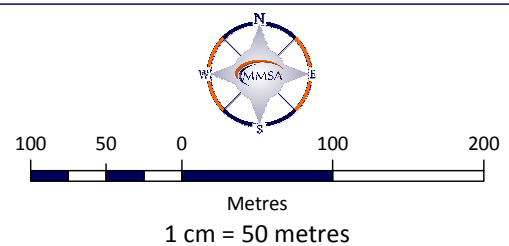
Land Use District

Crown Land (C)	Highway Development (HD)	Hamlet General (HG)
Agricultural (AG)	Rural Industrial (RI)	Direct Control 1 (DC-1)
Joint Plan Agricultural (JPAG)	Rural Industrial: Gravel Pit (RI-GP)	Direct Control 2 (DC-2)
Country Residential (CR)	Rural Industrial: Petroleum Facility (RI-PF)	Highway Commercial (HC)
Country Residential Hobby Farm (CR-2)	Rural Industrial: Shaftesbury Trail Gravel Pit (RI-SG)	Service Commercial (SC)
	Commercial - Industrial (CI)	



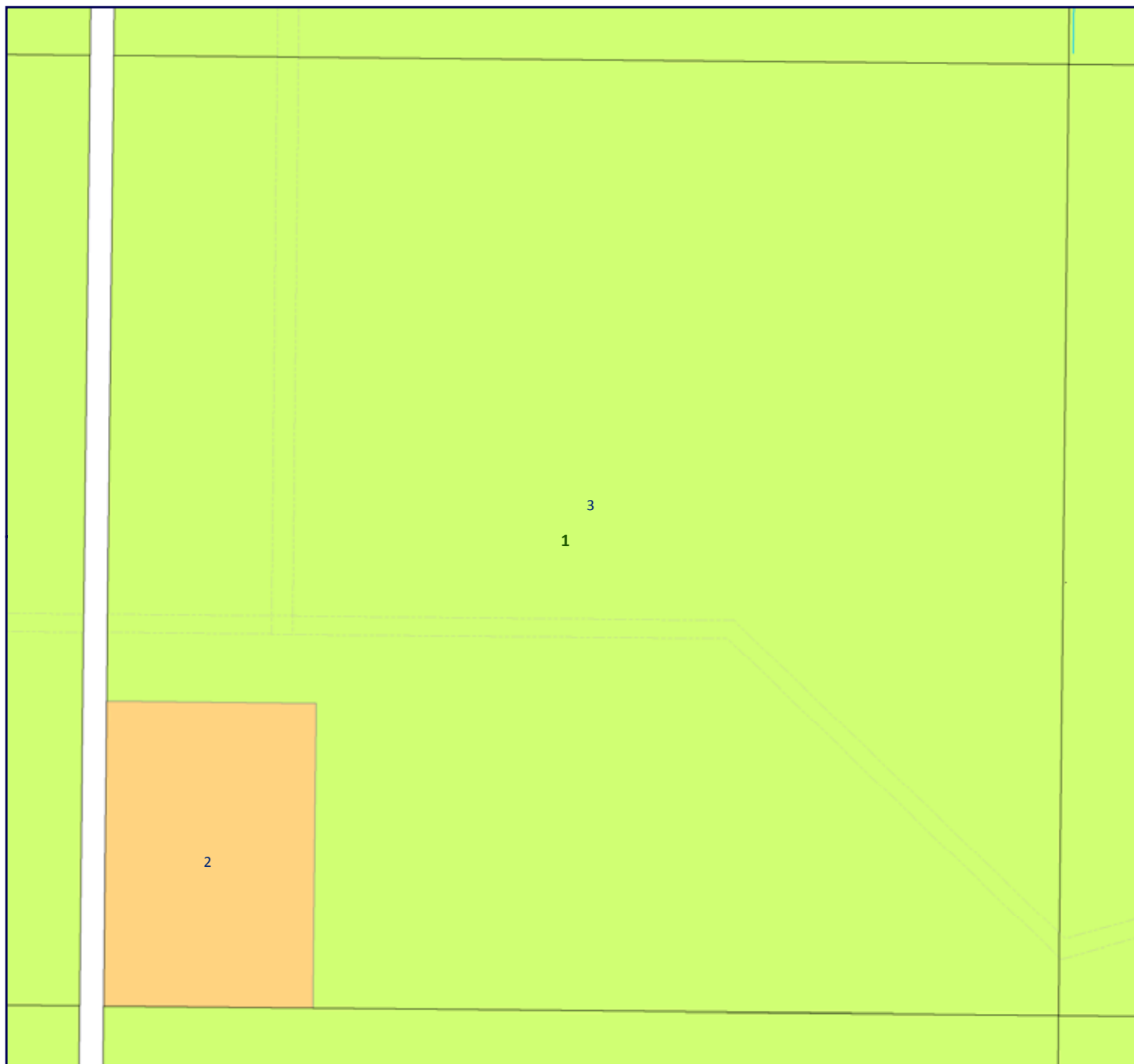
Municipal District of Peace No. 135 Land Use Bylaw No. 1/2012

Land Use Bylaw Detail Map 3



Adopted on: May 8, 2012
Updated and Printed: Oct 2016





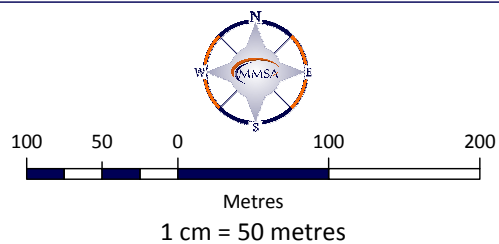
Land Use District

Crown Land (C)	Highway Development (HD)	Hamlet General (HG)
Agricultural (AG)	Rural Industrial (RI)	Direct Control 1 (DC-1)
Joint Plan Agricultural (JPAG)	Rural Industrial: Gravel Pit (RI-GP)	Direct Control 2 (DC-2)
Country Residential (CR)	Rural Industrial: Petroleum Facility (RI-PF)	Highway Commercial (HC)
Country Residential Hobby Farm (CR-2)	Rural Industrial: Shaftesbury Trail Gravel Pit (RI-SG)	Service Commercial (SC)
	Commercial - Industrial (CI)	



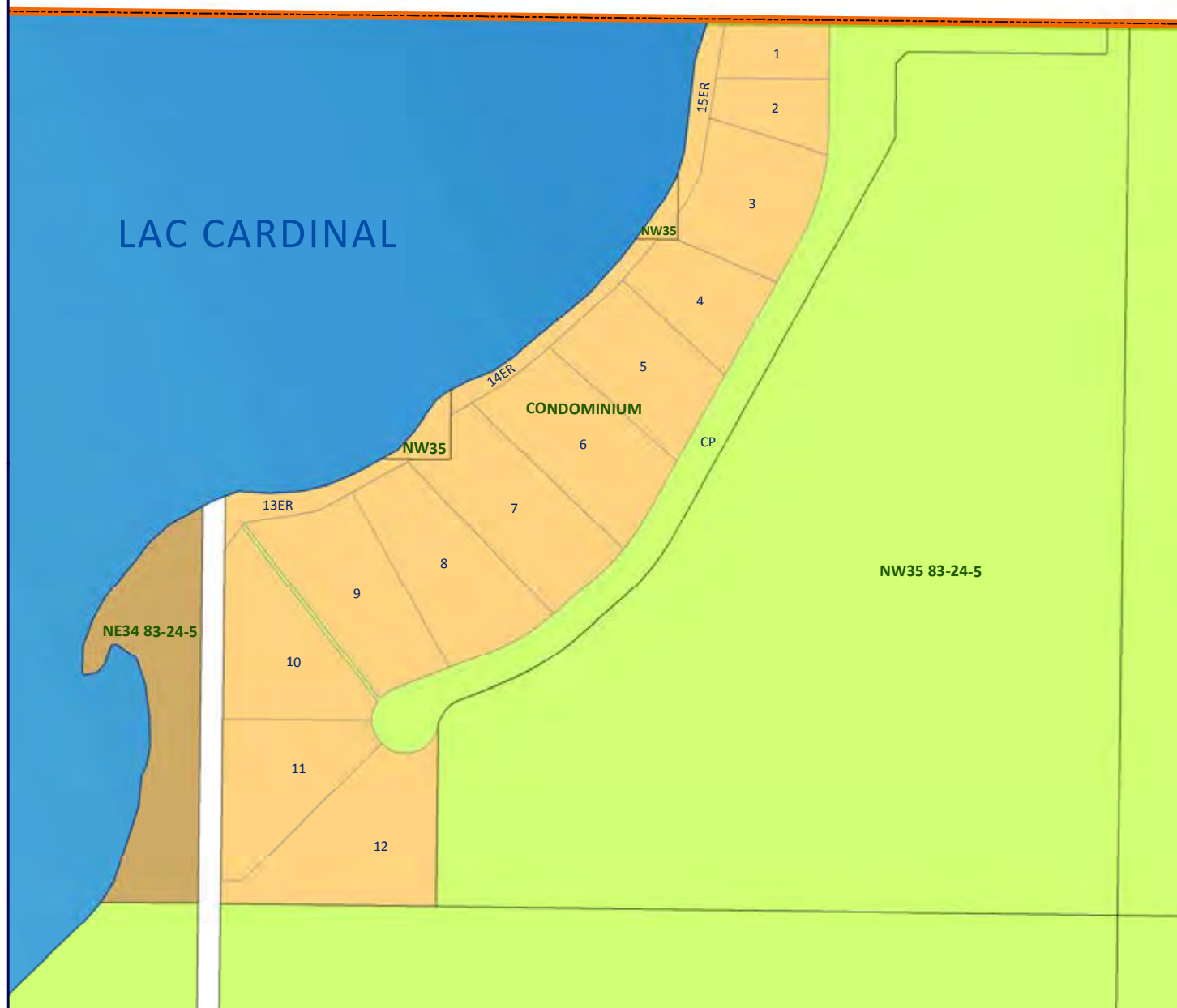
Municipal District of Peace No. 135 Land Use Bylaw No. 1/2012

Land Use Bylaw Detail Map 4



Adopted on: May 8, 2012
Updated and Printed: Oct 2016





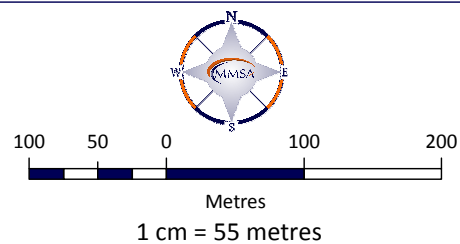
Land Use District

Crown Land (C)	Highway Development (HD)	Hamlet General (HG)
Agricultural (AG)	Rural Industrial (RI)	Direct Control 1 (DC-1)
Joint Plan Agricultural (JPAG)	Rural Industrial: Gravel Pit (RI-GP)	Direct Control 2 (DC-2)
Country Residential (CR)	Rural Industrial: Petroleum Facility (RI-PF)	Highway Commercial (HC)
Country Residential Hobby Farm (CR-2)	Rural Industrial: Shaftesbury Trail Gravel Pit (RI-SG)	Service Commercial (SC)
	Commercial - Industrial (CI)	



Municipal District of Peace No. 135 Land Use Bylaw No. 1/2012

Land Use Bylaw Detail Map 5



Adopted on: May 8, 2012
Updated and Printed: Oct 2016





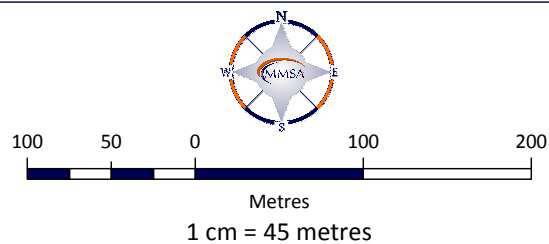
Land Use District

Crown Land (C)	Highway Development (HD)	Hamlet General (HG)
Agricultural (AG)	Rural Industrial (RI)	Direct Control 1 (DC-1)
Joint Plan Agricultural (JPAG)	Rural Industrial: Gravel Pit (RI-GP)	Direct Control 2 (DC-2)
Country Residential (CR)	Rural Industrial: Petroleum Facility (RI-PF)	Highway Commercial (HC)
Country Residential Hobby Farm (CR-2)	Rural Industrial: Shaftesbury Trail Gravel Pit (RI-SG)	Service Commercial (SC)
	Commercial - Industrial (CI)	



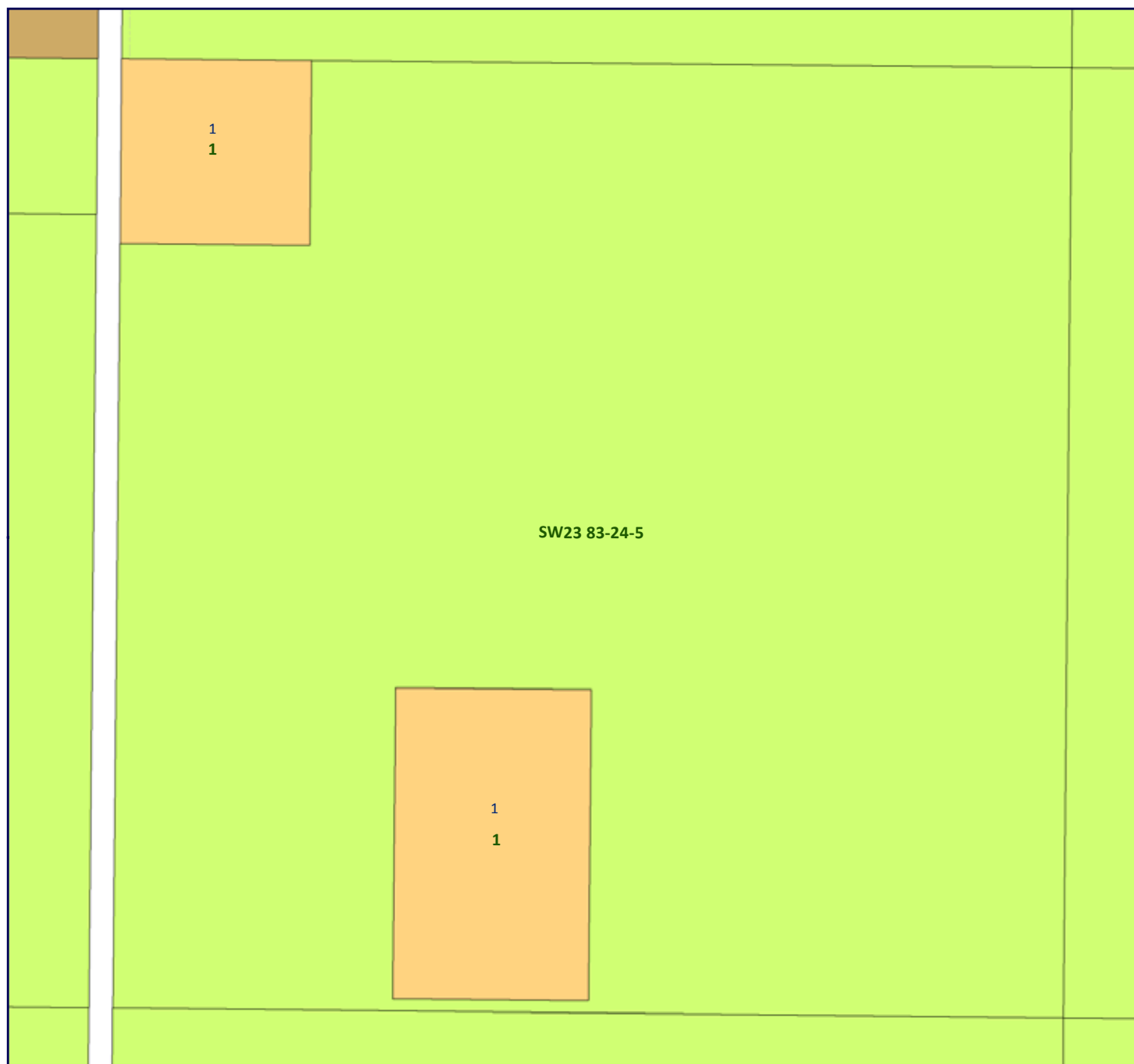
Municipal District of Peace No. 135
Land Use Bylaw No. 1/2012

Land Use Bylaw Detail Map 6



Adopted on: May 8, 2012
 Updated and Printed: Oct 2016





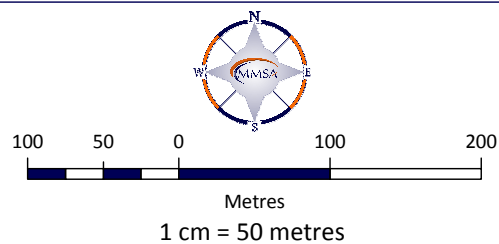
Land Use District

Crown Land (C)	Highway Development (HD)	Hamlet General (HG)
Agricultural (AG)	Rural Industrial (RI)	Direct Control 1 (DC-1)
Joint Plan Agricultural (JPAG)	Rural Industrial: Gravel Pit (RI-GP)	Direct Control 2 (DC-2)
Country Residential (CR)	Rural Industrial: Petroleum Facility (RI-PF)	Highway Commercial (HC)
Country Residential Hobby Farm (CR-2)	Rural Industrial: Shaftesbury Trail Gravel Pit (RI-SG)	Service Commercial (SC)
	Commercial - Industrial (CI)	



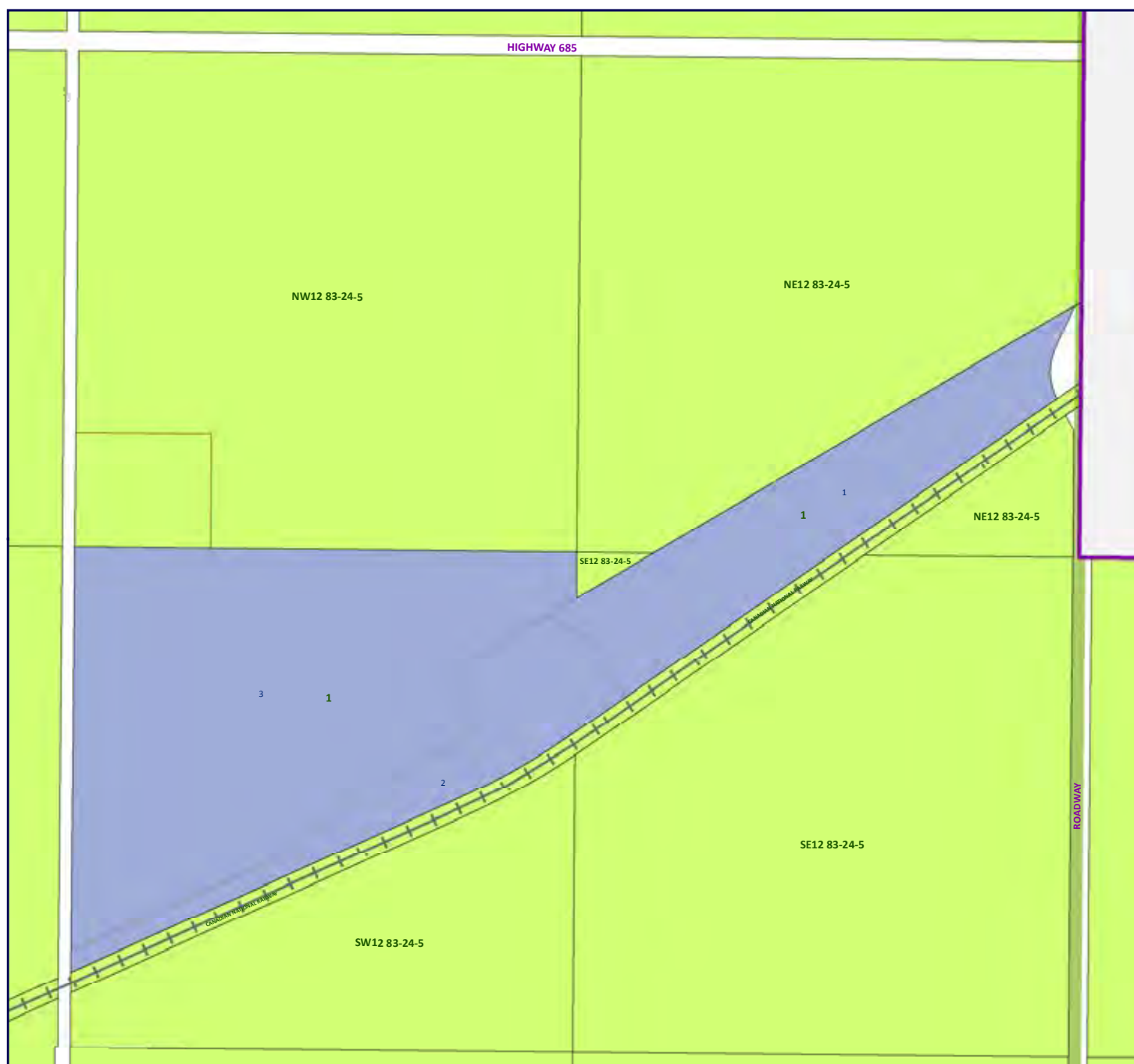
Municipal District of Peace No. 135 Land Use Bylaw No. 1/2012

Land Use Bylaw Detail Map 7




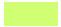

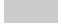
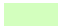











Adopted on: May 8, 2012
Updated and Printed: Oct 2016





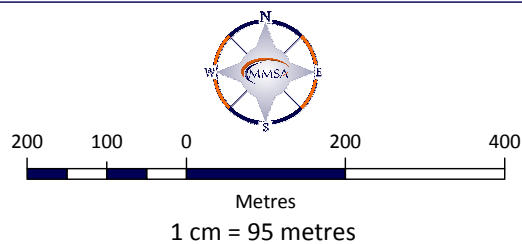
Land Use District

 Crown Land (C)	 Highway Development (HD)	 Hamlet General (HG)
 Agricultural (AG)	 Rural Industrial (RI)	 Direct Control 1 (DC-1)
 Joint Plan Agricultural (JPAG)	 Rural Industrial: Gravel Pit (RI-GP)	 Direct Control 2 (DC-2)
 Country Residential (CR)	 Rural Industrial: Petroleum Facility (RI-PF)	 Highway Commercial (HC)
 Country Residential Hobby Farm (CR-2)	 Rural Industrial: Shaftesbury Trail Gravel Pit (RI-SG)	 Service Commercial (SC)
	 Commercial - Industrial (CI)	



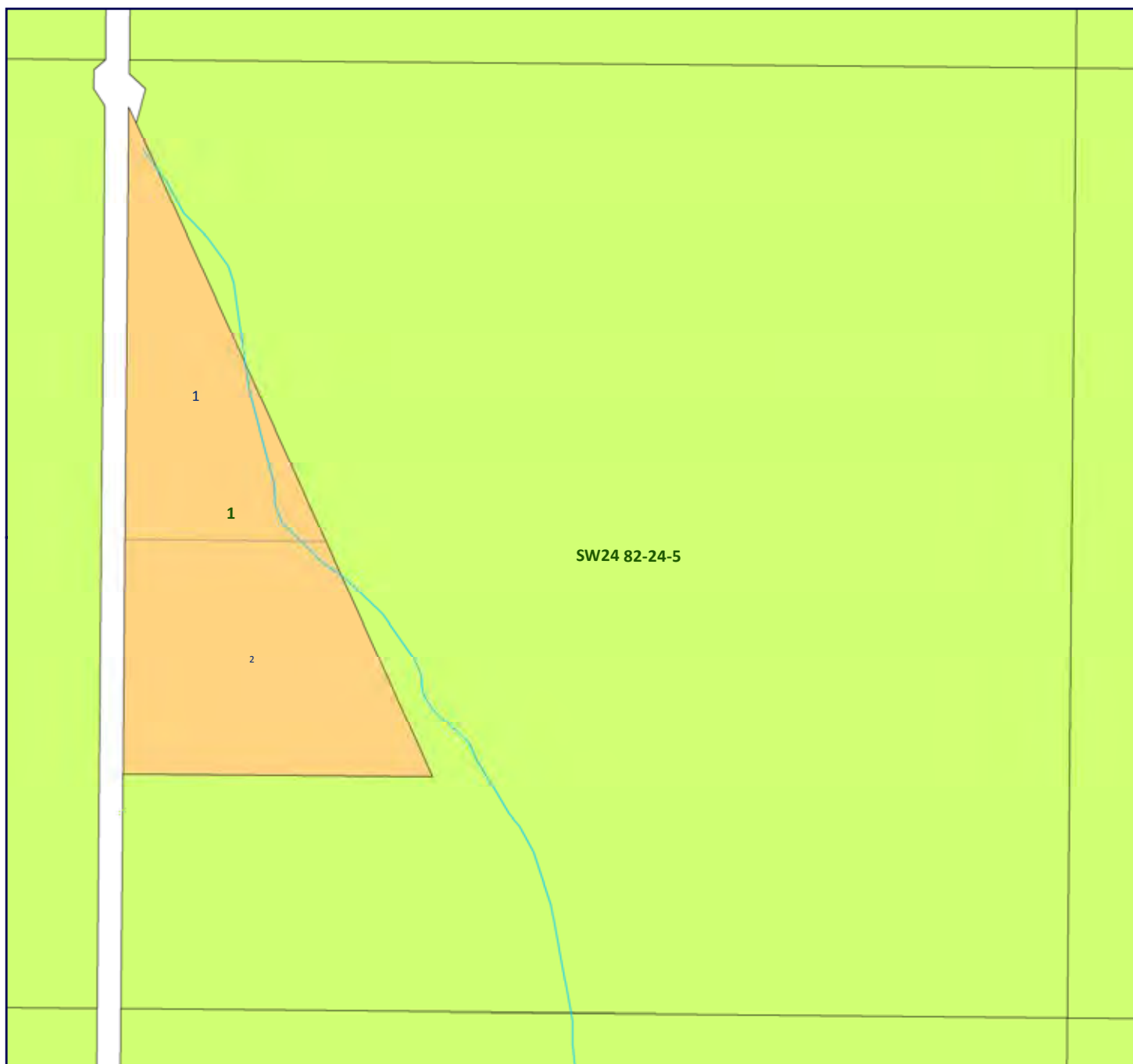
Municipal District of Peace No. 135 Land Use Bylaw No. 1/2012

Land Use Bylaw Detail Map 8



Adopted on: May 8, 2012
Updated and Printed: Oct 2016





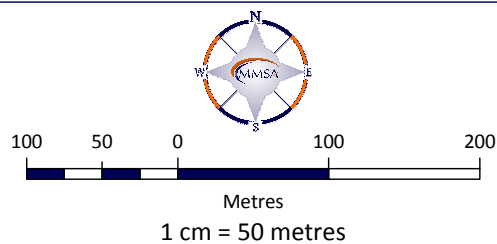
Land Use District

Crown Land (C)	Highway Development (HD)	Hamlet General (HG)
Agricultural (AG)	Rural Industrial (RI)	Direct Control 1 (DC-1)
Joint Plan Agricultural (JPAG)	Rural Industrial: Gravel Pit (RI-GP)	Direct Control 2 (DC-2)
Country Residential (CR)	Rural Industrial: Petroleum Facility (RI-PF)	Highway Commercial (HC)
Country Residential Hobby Farm (CR-2)	Rural Industrial: Shaftesbury Trail Gravel Pit (RI-SG)	Service Commercial (SC)
	Commercial - Industrial (CI)	



Municipal District of Peace No. 135 Land Use Bylaw No. 1/2012

Land Use Bylaw Detail Map 9


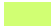
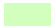




Adopted on: May 8, 2012
Updated and Printed: Oct 2016








Land Use District


-  Crown Land (C)
-  Agricultural (AG)
-  Joint Plan Agricultural (JPAG)
-  Country Residential (CR)
-  Country Residential Hobby Farm (CR-2)


 Highway Development (HD)

 Rural Industrial (RI)

 Rural Industrial: Gravel Pit (RI-GP)

 Rural Industrial: Petroleum Facility (RI-PF)


 Rural Industrial: Shaftesbury Trail Gravel Pit (RI-SG)


 Commercial - Industrial (CI)

 Hamlet General (HG)

 Direct Control 1 (DC-1)

 Direct Control 2 (DC-2)

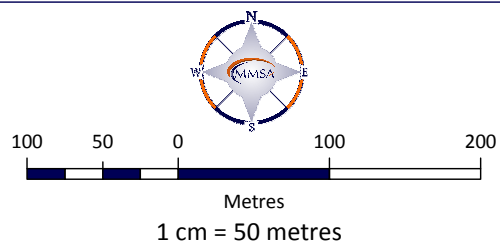
 Highway Commercial (HC)

 Service Commercial (SC)



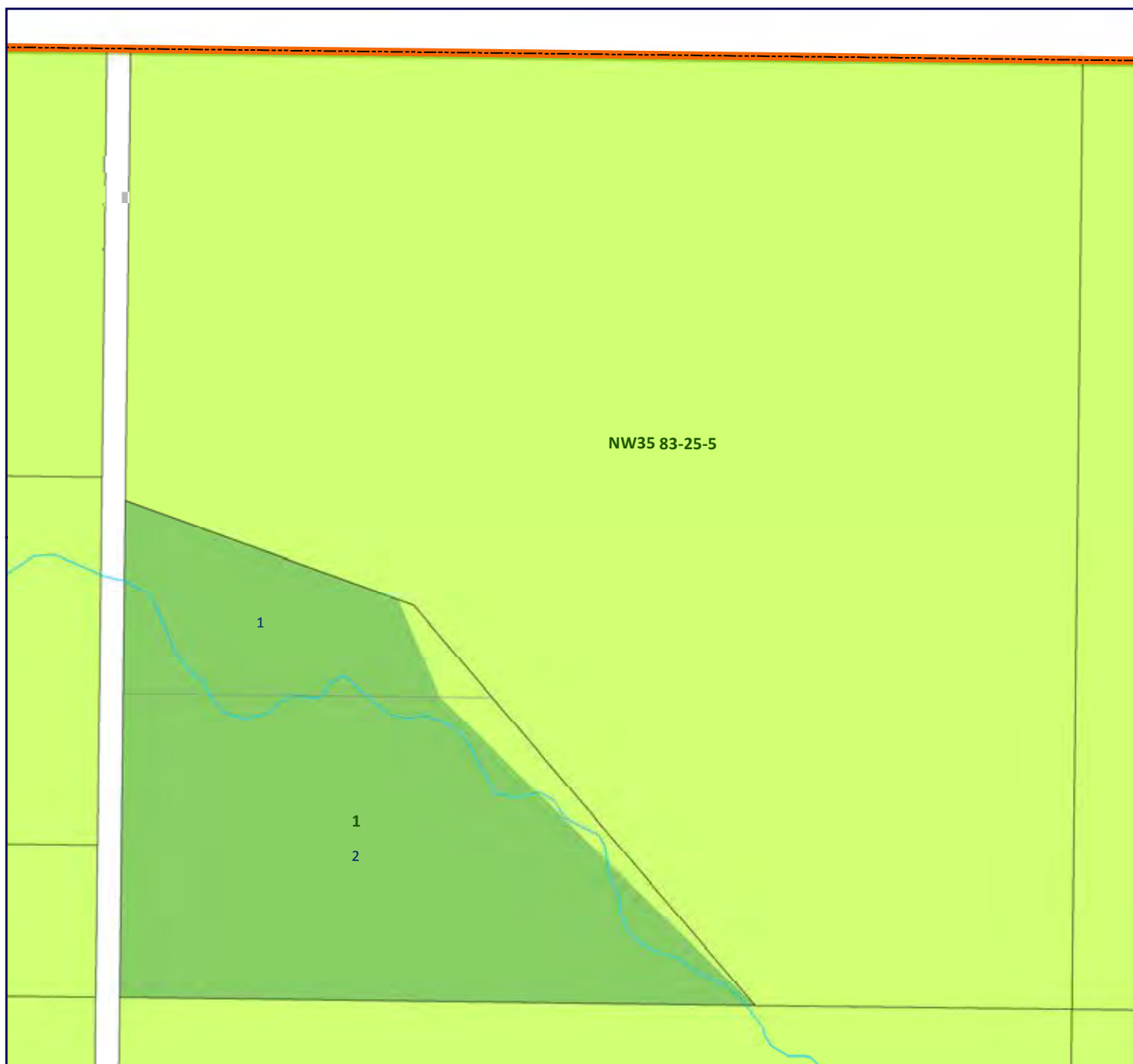
Municipal District of Peace No. 135 Land Use Bylaw No. 1/2012

Land Use Bylaw Detail Map 10



Adopted on: May 8, 2012
Updated and Printed: Oct 2016





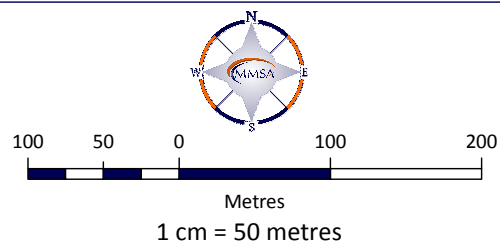
Land Use District

Crown Land (C)	Highway Development (HD)	Hamlet General (HG)
Agricultural (AG)	Rural Industrial (RI)	Direct Control 1 (DC-1)
Joint Plan Agricultural (JPAG)	Rural Industrial: Gravel Pit (RI-GP)	Direct Control 2 (DC-2)
Country Residential (CR)	Rural Industrial: Petroleum Facility (RI-PF)	Highway Commercial (HC)
Country Residential Hobby Farm (CR-2)	Rural Industrial: Shaftesbury Trail Gravel Pit (RI-SG)	Service Commercial (SC)
	Commercial - Industrial (CI)	



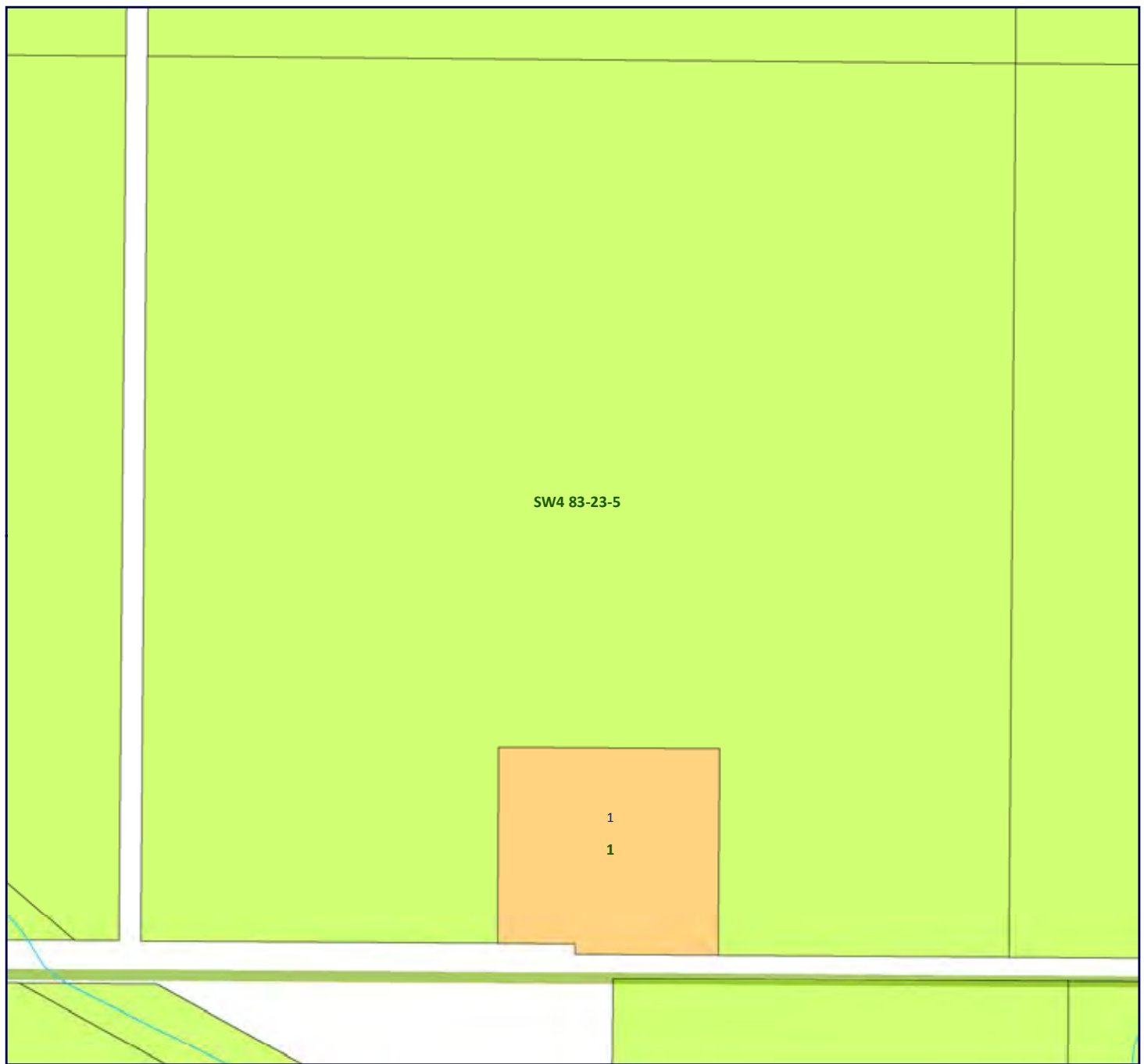
Municipal District of Peace No. 135 Land Use Bylaw No. 1/2012

Land Use Bylaw Detail Map 11



Adopted on: May 8, 2012
Updated and Printed: Oct 2016





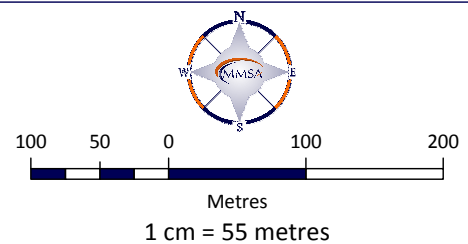
Land Use District

Crown Land (C)	Highway Development (HD)	Hamlet General (HG)
Agricultural (AG)	Rural Industrial (RI)	Direct Control 1 (DC-1)
Joint Plan Agricultural (JPAG)	Rural Industrial: Gravel Pit (RI-GP)	Direct Control 2 (DC-2)
Country Residential (CR)	Rural Industrial: Petroleum Facility (RI-PF)	Highway Commercial (HC)
Country Residential Hobby Farm (CR-2)	Rural Industrial: Shaftesbury Trail Gravel Pit (RI-SG)	Service Commercial (SC)
	Commercial - Industrial (CI)	



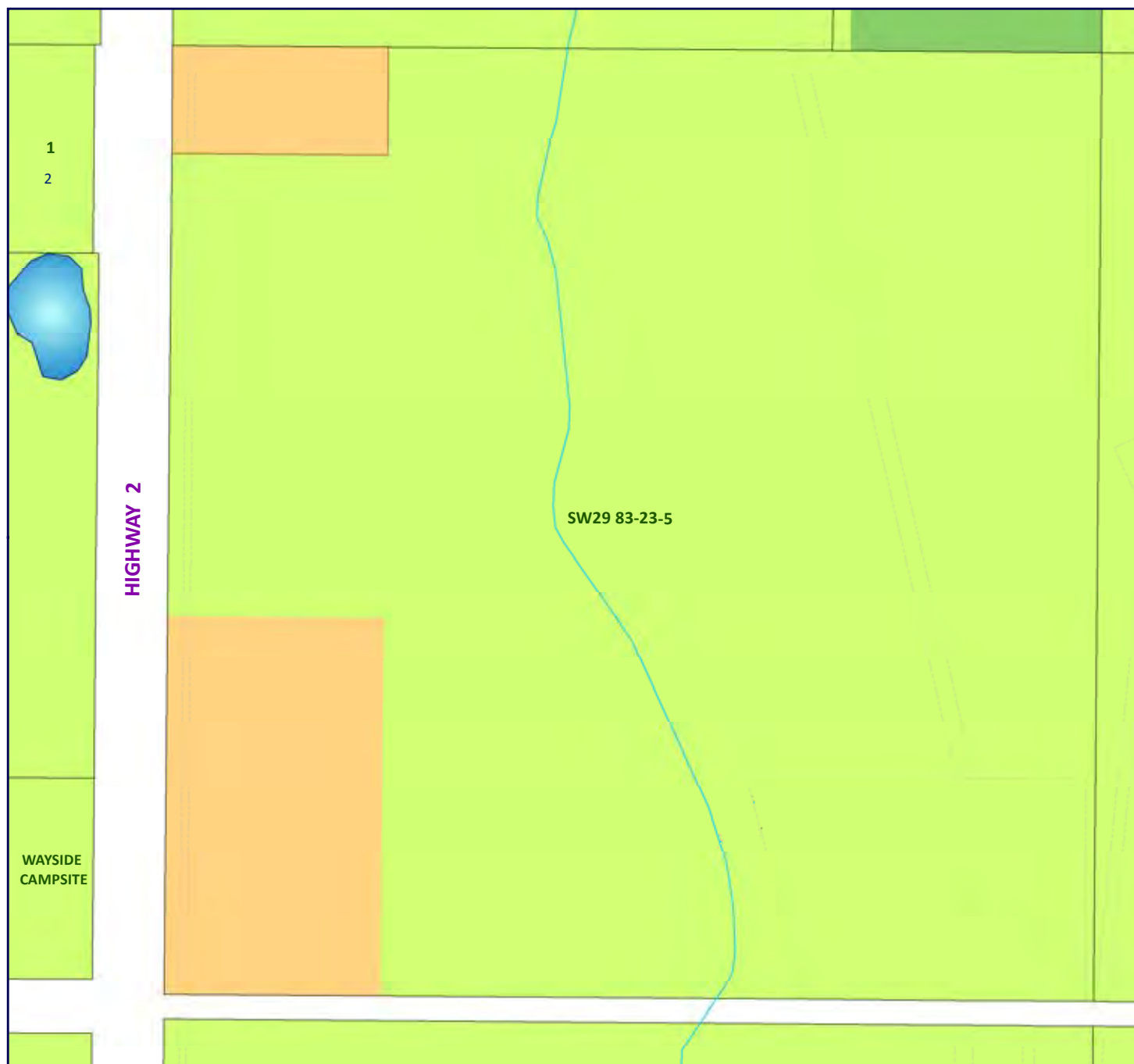
Municipal District of Peace No. 135 Land Use Bylaw No. 1/2012

Land Use Bylaw Detail Map 12



Adopted on: May 8, 2012
Updated and Printed: Oct 2016





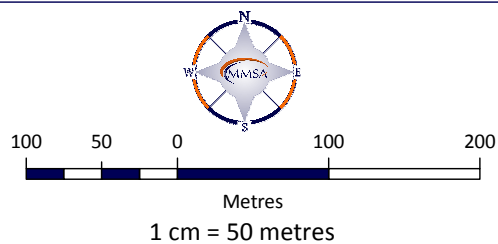
Land Use District

Crown Land (C)	Highway Development (HD)	Hamlet General (HG)
Agricultural (AG)	Rural Industrial (RI)	Direct Control 1 (DC-1)
Joint Plan Agricultural (JPAG)	Rural Industrial: Gravel Pit (RI-GP)	Direct Control 2 (DC-2)
Country Residential (CR)	Rural Industrial: Petroleum Facility (RI-PF)	Highway Commercial (HC)
Country Residential Hobby Farm (CR-2)	Rural Industrial: Shaftesbury Trail Gravel Pit (RI-SG)	Service Commercial (SC)
	Commercial - Industrial (CI)	



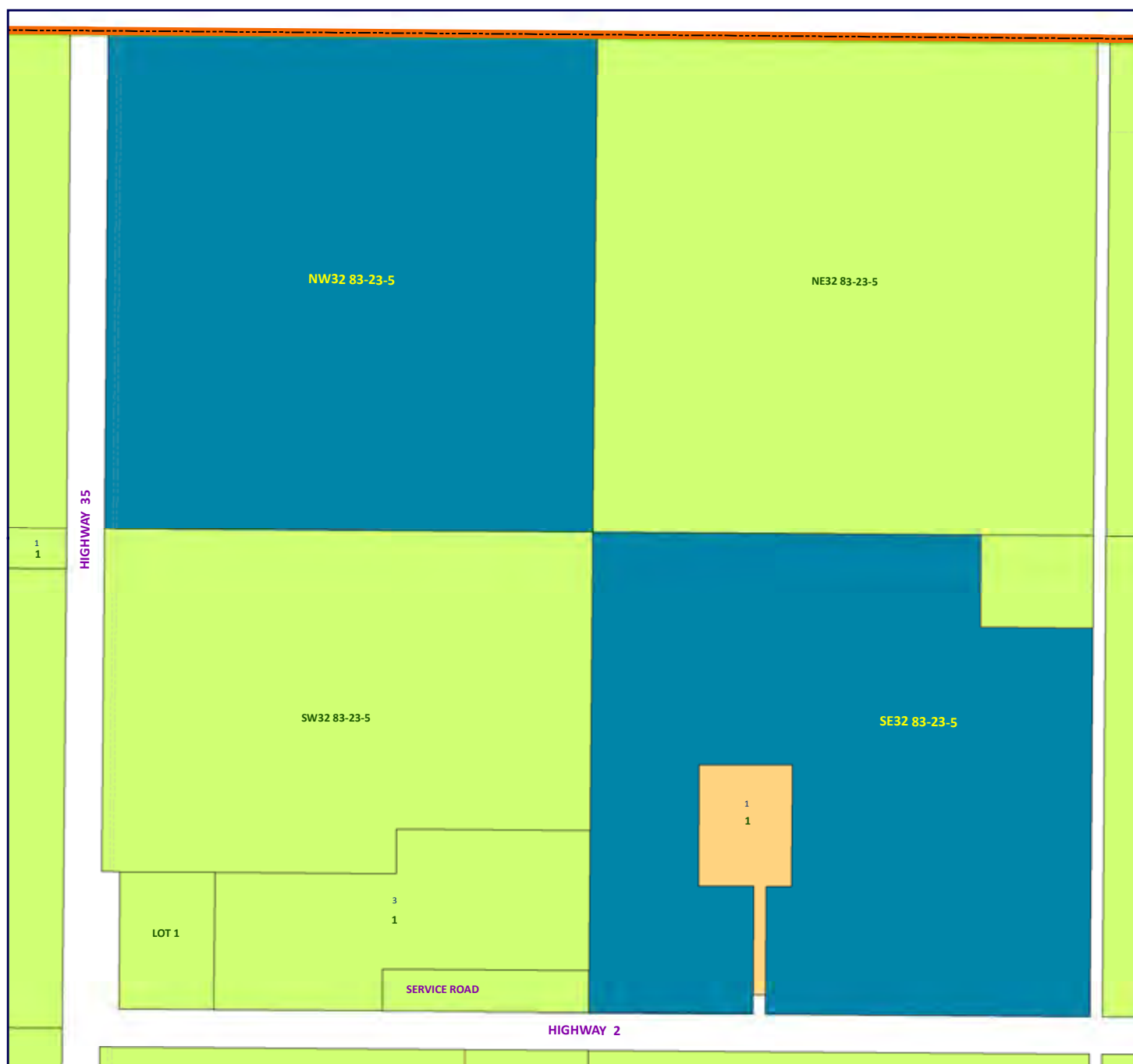
Municipal District of Peace No. 135 Land Use Bylaw No. 1/2012

Land Use Bylaw Detail Map 13



Adopted on: May 8, 2012
Updated and Printed: Oct 2016





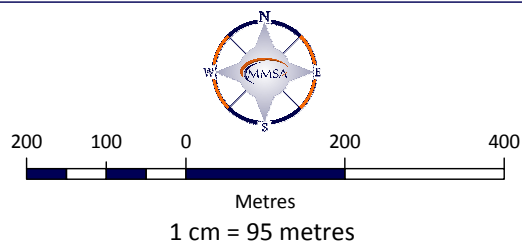
Land Use District

Crown Land (C)	Highway Development (HD)	Hamlet General (HG)
Agricultural (AG)	Rural Industrial (RI)	Direct Control 1 (DC-1)
Joint Plan Agricultural (JPAG)	Rural Industrial: Gravel Pit (RI-GP)	Direct Control 2 (DC-2)
Country Residential (CR)	Rural Industrial: Petroleum Facility (RI-PF)	Highway Commercial (HC)
Country Residential Hobby Farm (CR-2)	Rural Industrial: Shaftesbury Trail Gravel Pit (RI-SG)	Service Commercial (SC)
	Commercial - Industrial (CI)	



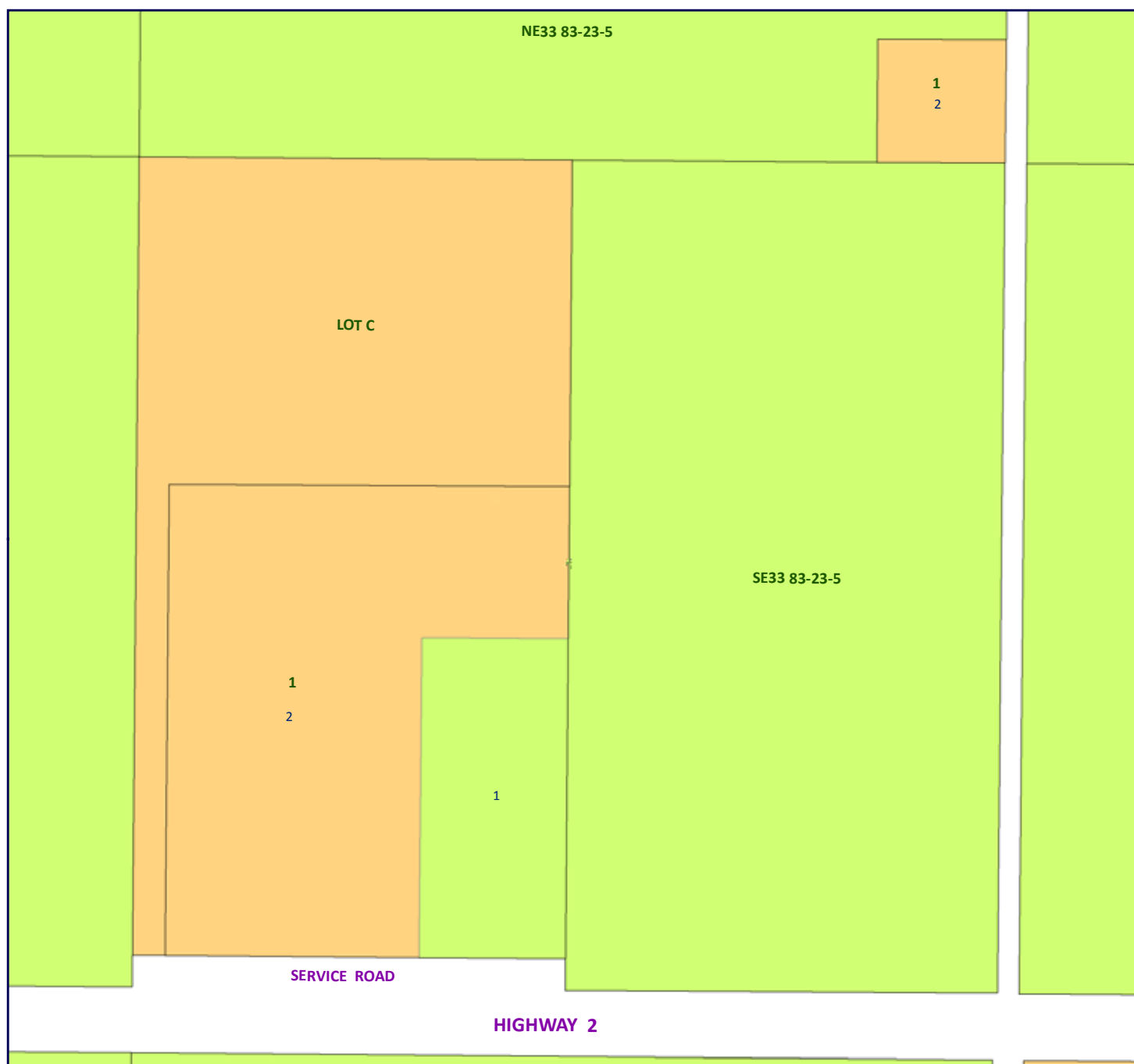
Municipal District of Peace No. 135 Land Use Bylaw No. 1/2012

Land Use Bylaw Detail Map 14



Adopted on: May 8, 2012
Updated and Printed: Oct 2016





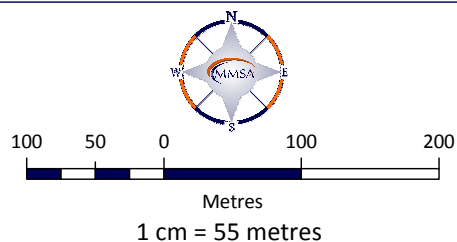
Land Use District

Crown Land (C)	Highway Development (HD)	Hamlet General (HG)
Agricultural (AG)	Rural Industrial (RI)	Direct Control 1 (DC-1)
Joint Plan Agricultural (JPAG)	Rural Industrial: Gravel Pit (RI-GP)	Direct Control 2 (DC-2)
Country Residential (CR)	Rural Industrial: Petroleum Facility (RI-PF)	Highway Commercial (HC)
Country Residential Hobby Farm (CR-2)	Rural Industrial: Shaftesbury Trail Gravel Pit (RI-SG)	Service Commercial (SC)
	Commercial - Industrial (CI)	



Municipal District of Peace No. 135 Land Use Bylaw No. 1/2012

Land Use Bylaw Detail Map 15



Adopted on: May 8, 2012
Updated and Printed: Oct 2016





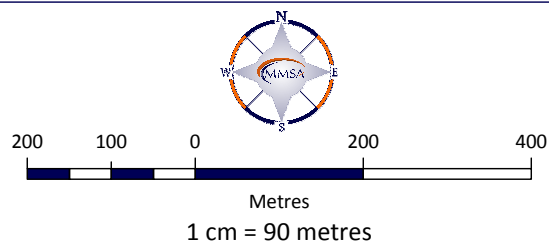
Land Use District

Crown Land (C)	Highway Development (HD)	Hamlet General (HG)
Agricultural (AG)	Rural Industrial (RI)	Direct Control 1 (DC-1)
Joint Plan Agricultural (JPAG)	Rural Industrial: Gravel Pit (RI-GP)	Direct Control 2 (DC-2)
Country Residential (CR)	Rural Industrial: Petroleum Facility (RI-PF)	Highway Commercial (HC)
Country Residential Hobby Farm (CR-2)	Rural Industrial: Shaftesbury Trail Gravel Pit (RI-SG)	Service Commercial (SC)
	Commercial - Industrial (CI)	



Municipal District of Peace No. 135 Land Use Bylaw No. 1/2012

Land Use Bylaw Detail Map 16



Adopted on: May 8, 2012
Updated and Printed: Oct 2016





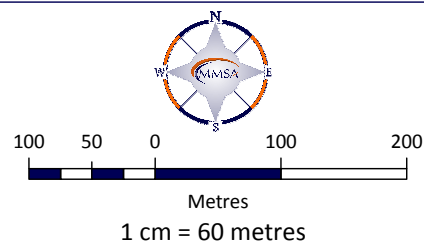
Land Use District

Crown Land (C)	Highway Development (HD)	Hamlet General (HG)
Agricultural (AG)	Rural Industrial (RI)	Direct Control 1 (DC-1)
Joint Plan Agricultural (JPAG)	Rural Industrial: Gravel Pit (RI-GP)	Direct Control 2 (DC-2)
Country Residential (CR)	Rural Industrial: Petroleum Facility (RI-PF)	Highway Commercial (HC)
Country Residential Hobby Farm (CR-2)	Rural Industrial: Shaftesbury Trail Gravel Pit (RI-SG)	Service Commercial (SC)
	Commercial - Industrial (CI)	



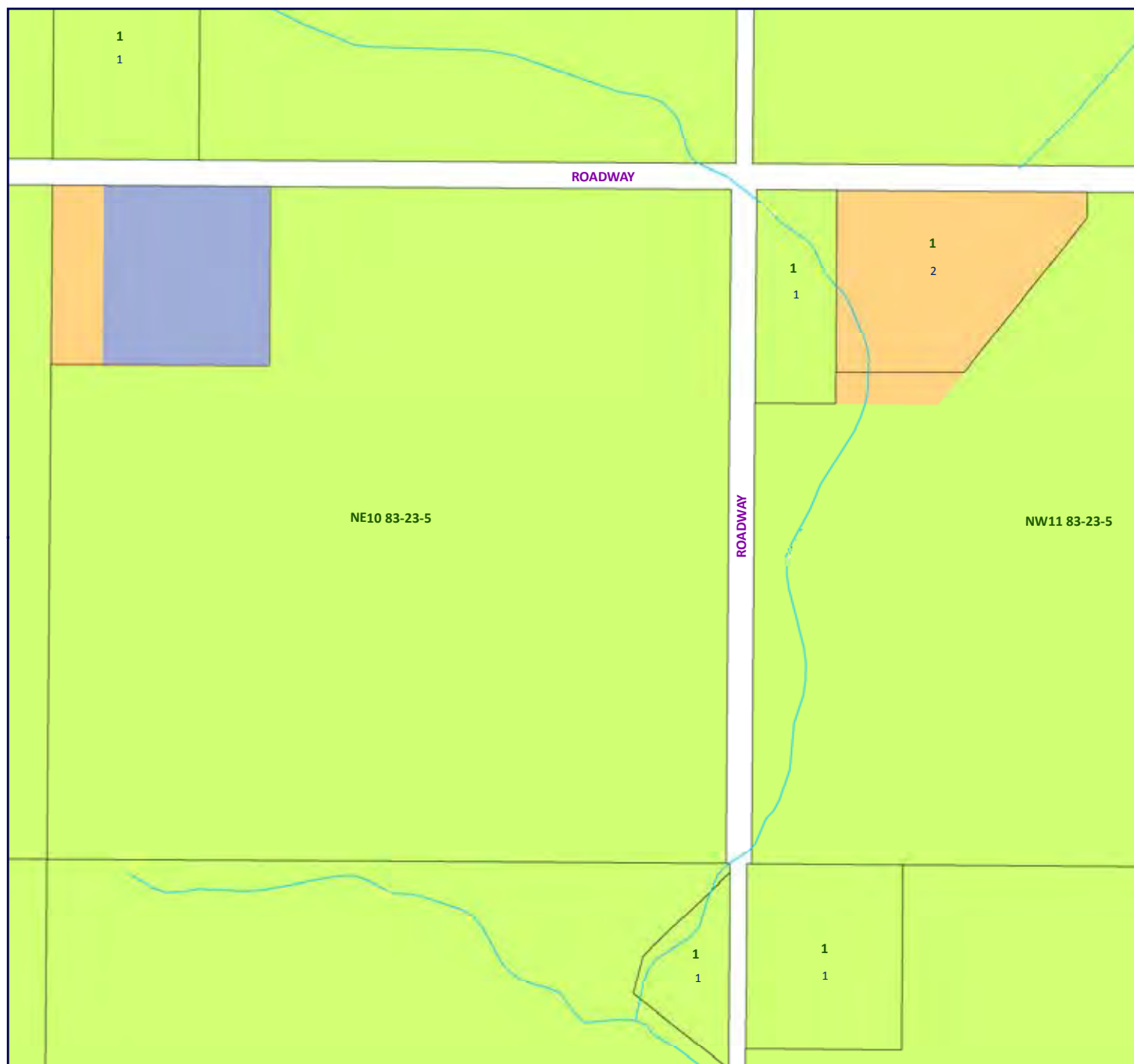
Municipal District of Peace No. 135 Land Use Bylaw No. 1/2012

Land Use Bylaw Detail Map 17



Adopted on: May 8, 2012
Updated and Printed: Oct 2016





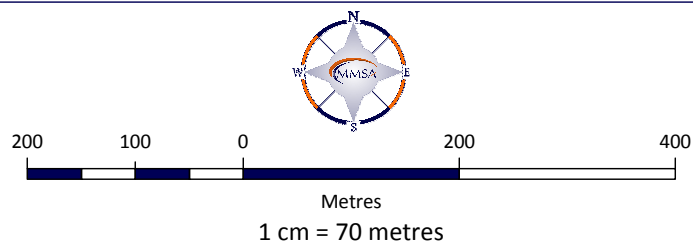
Land Use District

Crown Land (C)	Highway Development (HD)	Hamlet General (HG)
Agricultural (AG)	Rural Industrial (RI)	Direct Control 1 (DC-1)
Joint Plan Agricultural (JPAG)	Rural Industrial: Gravel Pit (RI-GP)	Direct Control 2 (DC-2)
Country Residential (CR)	Rural Industrial: Petroleum Facility (RI-PF)	Highway Commercial (HC)
Country Residential Hobby Farm (CR-2)	Rural Industrial: Shaftesbury Trail Gravel Pit (RI-SG)	Service Commercial (SC)
	Commercial - Industrial (CI)	



Municipal District of Peace No. 135 Land Use Bylaw No. 1/2012

Land Use Bylaw Detail Map 18



Adopted on: May 8, 2012
Updated and Printed: Oct 2016





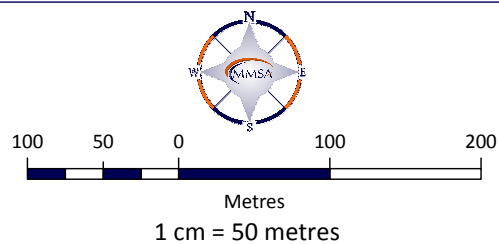
Land Use District

Crown Land (C)	Highway Development (HD)	Hamlet General (HG)
Agricultural (AG)	Rural Industrial (RI)	Direct Control 1 (DC-1)
Joint Plan Agricultural (JPAG)	Rural Industrial: Gravel Pit (RI-GP)	Direct Control 2 (DC-2)
Country Residential (CR)	Rural Industrial: Petroleum Facility (RI-PF)	Highway Commercial (HC)
Country Residential Hobby Farm (CR-2)	Rural Industrial: Shaftesbury Trail Gravel Pit (RI-SG)	Service Commercial (SC)
	Commercial - Industrial (CI)	



Municipal District of Peace No. 135 Land Use Bylaw No. 1/2012

Land Use Bylaw Detail Map 19



Adopted on: May 8, 2012
Updated and Printed: Oct 2016





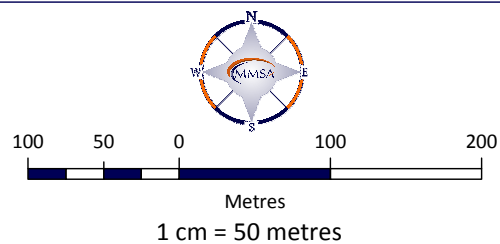
Land Use District

Crown Land (C)	Highway Development (HD)	Hamlet General (HG)
Agricultural (AG)	Rural Industrial (RI)	Direct Control 1 (DC-1)
Joint Plan Agricultural (JPAG)	Rural Industrial: Gravel Pit (RI-GP)	Direct Control 2 (DC-2)
Country Residential (CR)	Rural Industrial: Petroleum Facility (RI-PF)	Highway Commercial (HC)
Country Residential Hobby Farm (CR-2)	Rural Industrial: Shaftesbury Trail Gravel Pit (RI-SG)	Service Commercial (SC)
	Commercial - Industrial (CI)	



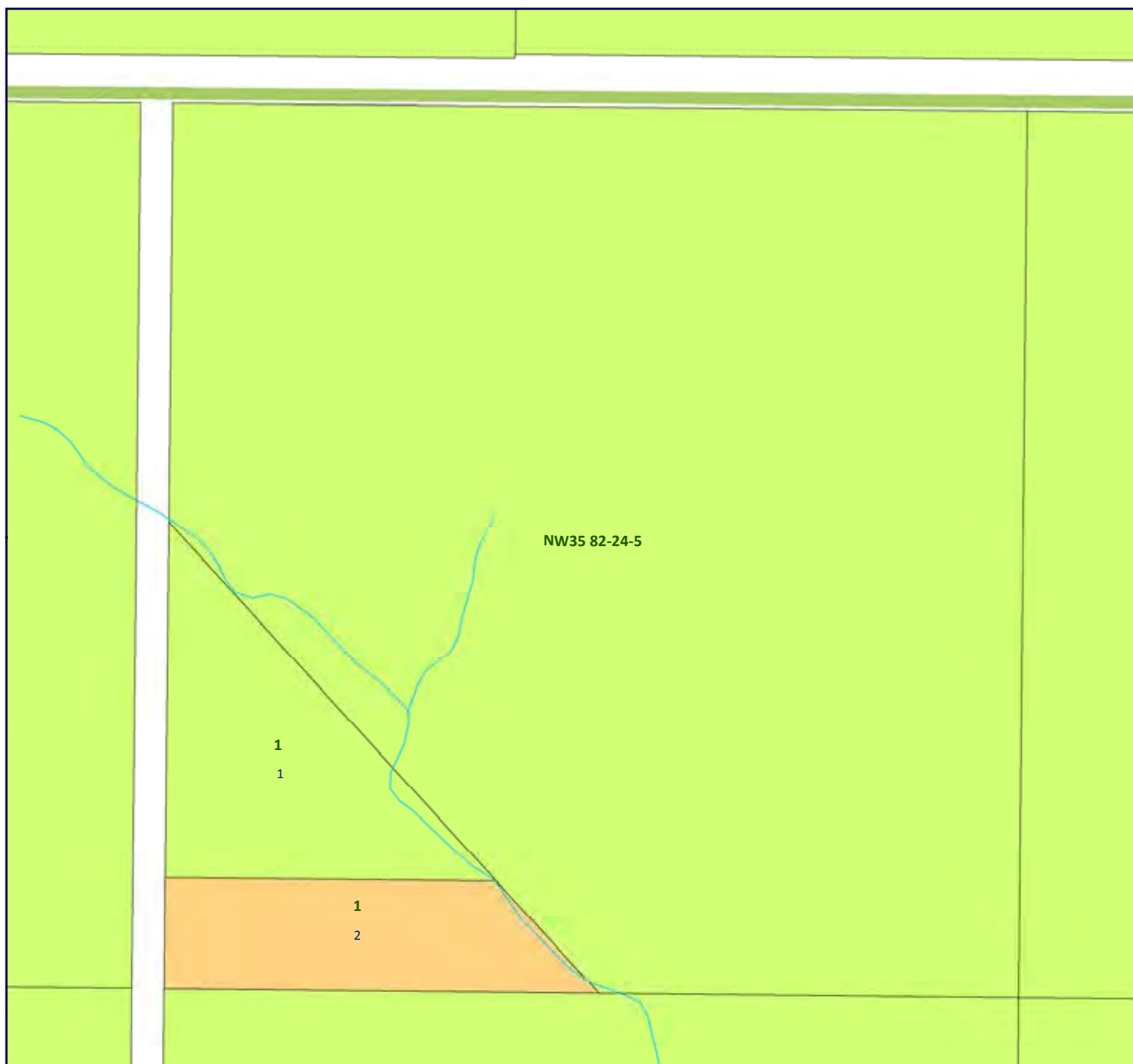
Municipal District of Peace No. 135 Land Use Bylaw No. 1/2012

Land Use Bylaw Detail Map 20



Adopted on: May 8, 2012
Updated and Printed: Oct 2016





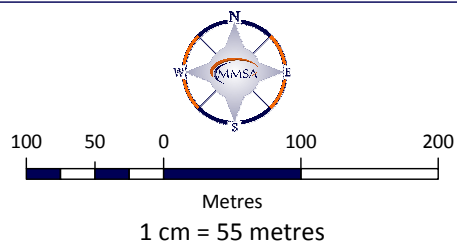
Land Use District

Crown Land (C)	Highway Development (HD)	Hamlet General (HG)
Agricultural (AG)	Rural Industrial (RI)	Direct Control 1 (DC-1)
Joint Plan Agricultural (JPAG)	Rural Industrial: Gravel Pit (RI-GP)	Direct Control 2 (DC-2)
Country Residential (CR)	Rural Industrial: Petroleum Facility (RI-PF)	Highway Commercial (HC)
Country Residential Hobby Farm (CR-2)	Rural Industrial: Shaftesbury Trail Gravel Pit (RI-SG)	Service Commercial (SC)
	Commercial - Industrial (CI)	



Municipal District of Peace No. 135 Land Use Bylaw No. 1/2012

Land Use Bylaw Detail Map 21



Adopted on: May 8, 2012
Updated and Printed: Oct 2016





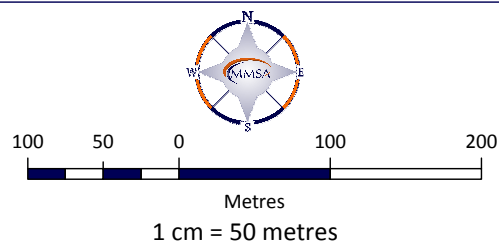
Land Use District

Crown Land (C)	Highway Development (HD)	Hamlet General (HG)
Agricultural (AG)	Rural Industrial (RI)	Direct Control 1 (DC-1)
Joint Plan Agricultural (JPAG)	Rural Industrial: Gravel Pit (RI-GP)	Direct Control 2 (DC-2)
Country Residential (CR)	Rural Industrial: Petroleum Facility (RI-PF)	Highway Commercial (HC)
Country Residential Hobby Farm (CR-2)	Rural Industrial: Shaftesbury Trail Gravel Pit (RI-SG)	Service Commercial (SC)
	Commercial - Industrial (CI)	



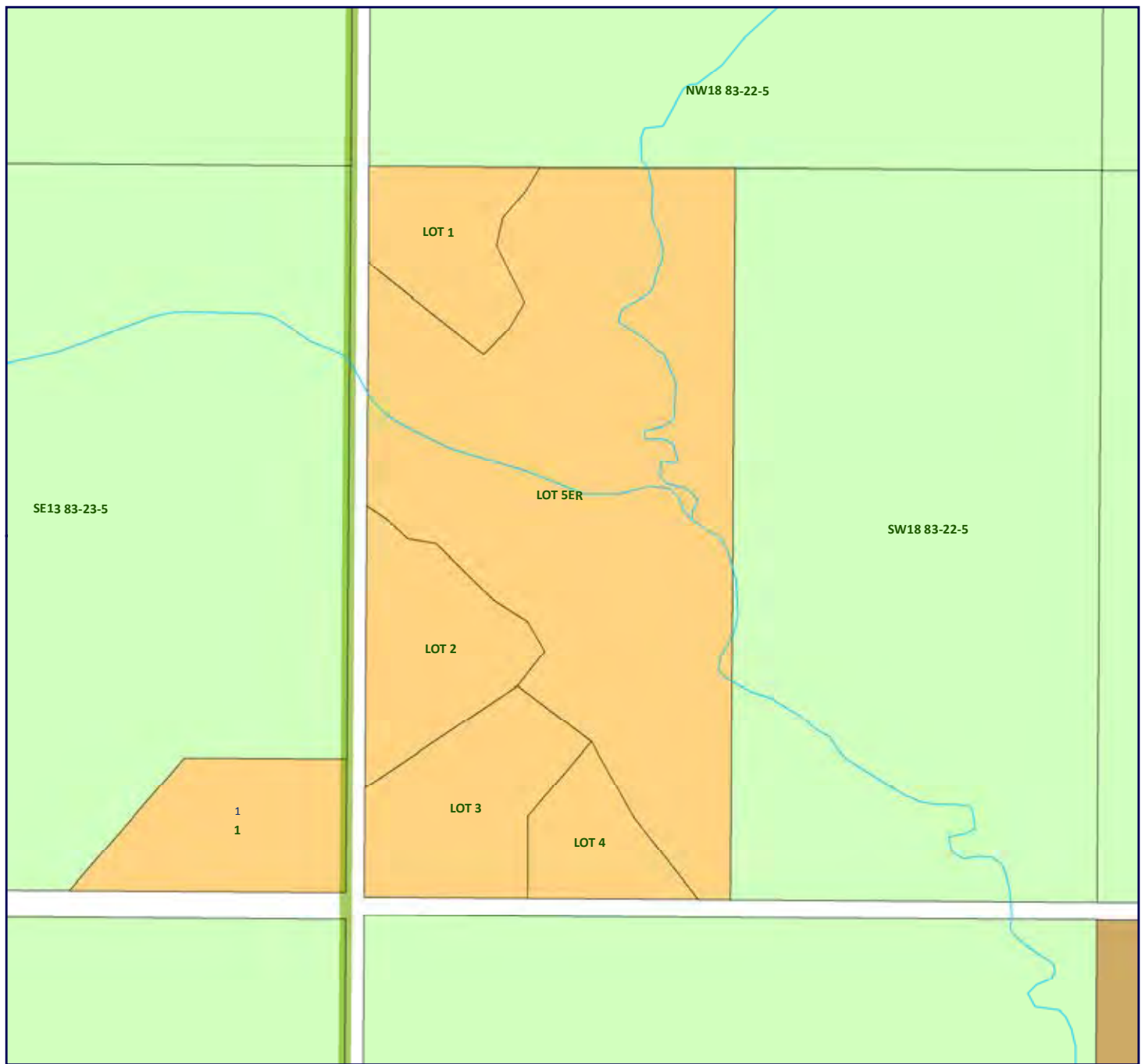
Municipal District of Peace No. 135 Land Use Bylaw No. 1/2012

Land Use Bylaw Detail Map 22



Adopted on: May 8, 2012
Updated and Printed: Oct 2016





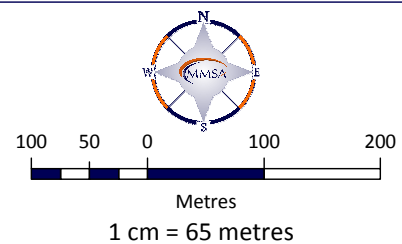
Land Use District

Crown Land (C)	Highway Development (HD)	Hamlet General (HG)
Agricultural (AG)	Rural Industrial (RI)	Direct Control 1 (DC-1)
Joint Plan Agricultural (JPAG)	Rural Industrial: Gravel Pit (RI-GP)	Direct Control 2 (DC-2)
Country Residential (CR)	Rural Industrial: Petroleum Facility (RI-PF)	Highway Commercial (HC)
Country Residential Hobby Farm (CR-2)	Rural Industrial: Shaftesbury Trail Gravel Pit (RI-SG)	Service Commercial (SC)
	Commercial - Industrial (CI)	



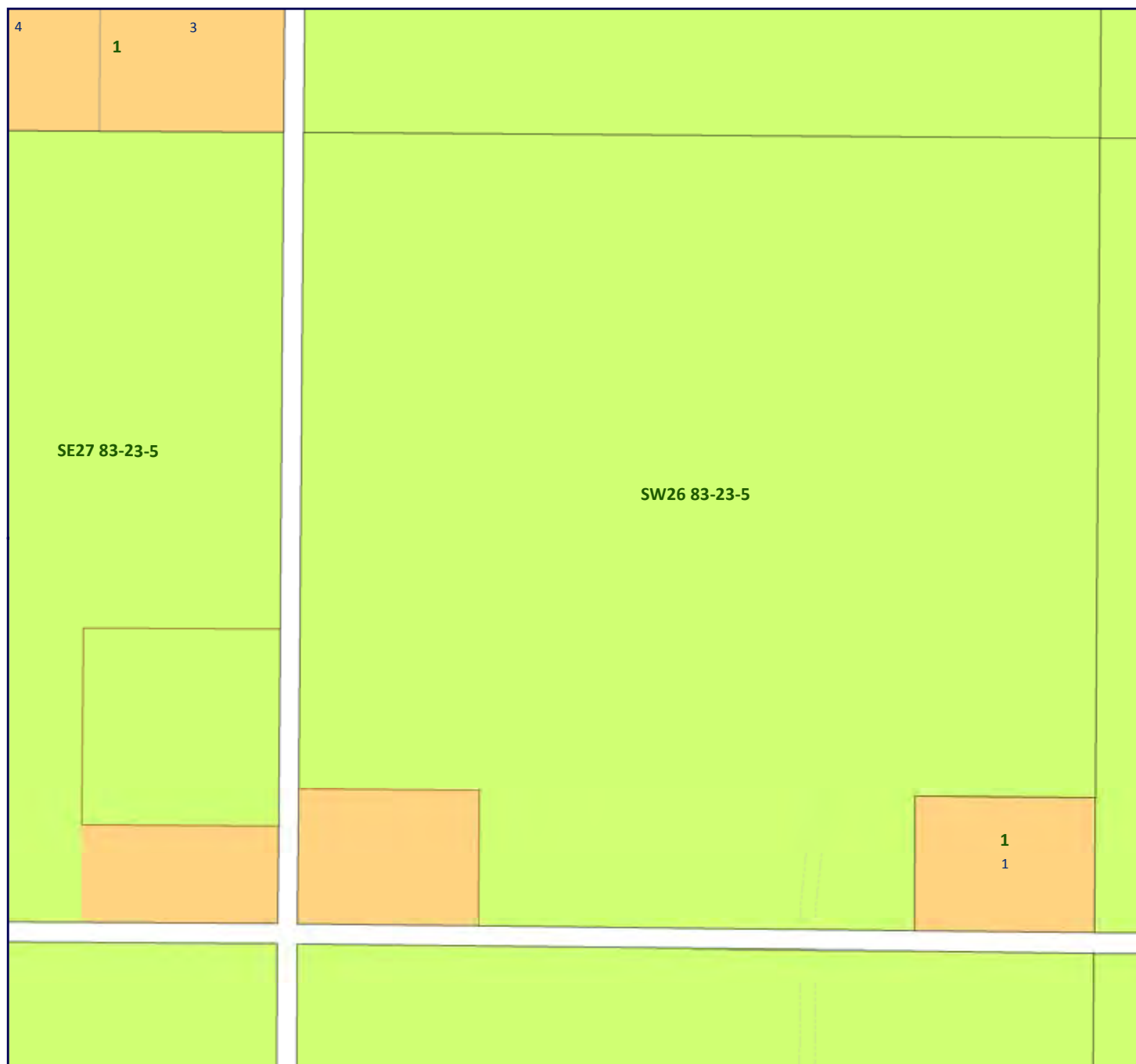
Municipal District of Peace No. 135 Land Use Bylaw No. 1/2012

Land Use Bylaw Detail Map 23



Adopted on: May 8, 2012
Updated and Printed: Oct 2016





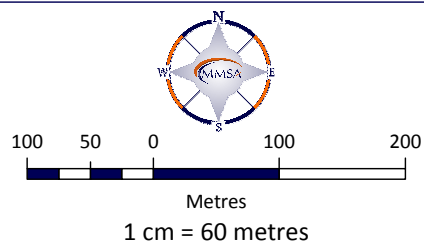
Land Use District

Crown Land (C)	Highway Development (HD)	Hamlet General (HG)
Agricultural (AG)	Rural Industrial (RI)	Direct Control 1 (DC-1)
Joint Plan Agricultural (JPAG)	Rural Industrial: Gravel Pit (RI-GP)	Direct Control 2 (DC-2)
Country Residential (CR)	Rural Industrial: Petroleum Facility (RI-PF)	Highway Commercial (HC)
Country Residential Hobby Farm (CR-2)	Rural Industrial: Shaftesbury Trail Gravel Pit (RI-SG)	Service Commercial (SC)
	Commercial - Industrial (CI)	



Municipal District of Peace No. 135 Land Use Bylaw No. 1/2012

Land Use Bylaw Detail Map 24



Adopted on: May 8, 2012
Updated and Printed: Oct 2016





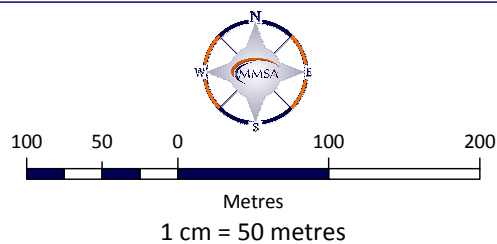
Land Use District

Crown Land (C)	Highway Development (HD)	Hamlet General (HG)
Agricultural (AG)	Rural Industrial (RI)	Direct Control 1 (DC-1)
Joint Plan Agricultural (JPAG)	Rural Industrial: Gravel Pit (RI-GP)	Direct Control 2 (DC-2)
Country Residential (CR)	Rural Industrial: Petroleum Facility (RI-PF)	Highway Commercial (HC)
Country Residential Hobby Farm (CR-2)	Rural Industrial: Shaftesbury Trail Gravel Pit (RI-SG)	Service Commercial (SC)
	Commercial - Industrial (CI)	



Municipal District of Peace No. 135 Land Use Bylaw No. 1/2012

Land Use Bylaw Detail Map 25



Adopted on: May 8, 2012
Updated and Printed: Oct 2016





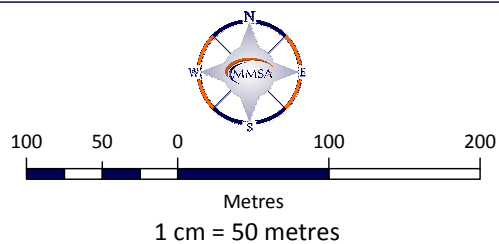
Land Use District

Crown Land (C)	Highway Development (HD)	Hamlet General (HG)
Agricultural (AG)	Rural Industrial (RI)	Direct Control 1 (DC-1)
Joint Plan Agricultural (JPAG)	Rural Industrial: Gravel Pit (RI-GP)	Direct Control 2 (DC-2)
Country Residential (CR)	Rural Industrial: Petroleum Facility (RI-PF)	Highway Commercial (HC)
Country Residential Hobby Farm (CR-2)	Rural Industrial: Shaftesbury Trail Gravel Pit (RI-SG)	Service Commercial (SC)
	Commercial - Industrial (CI)	



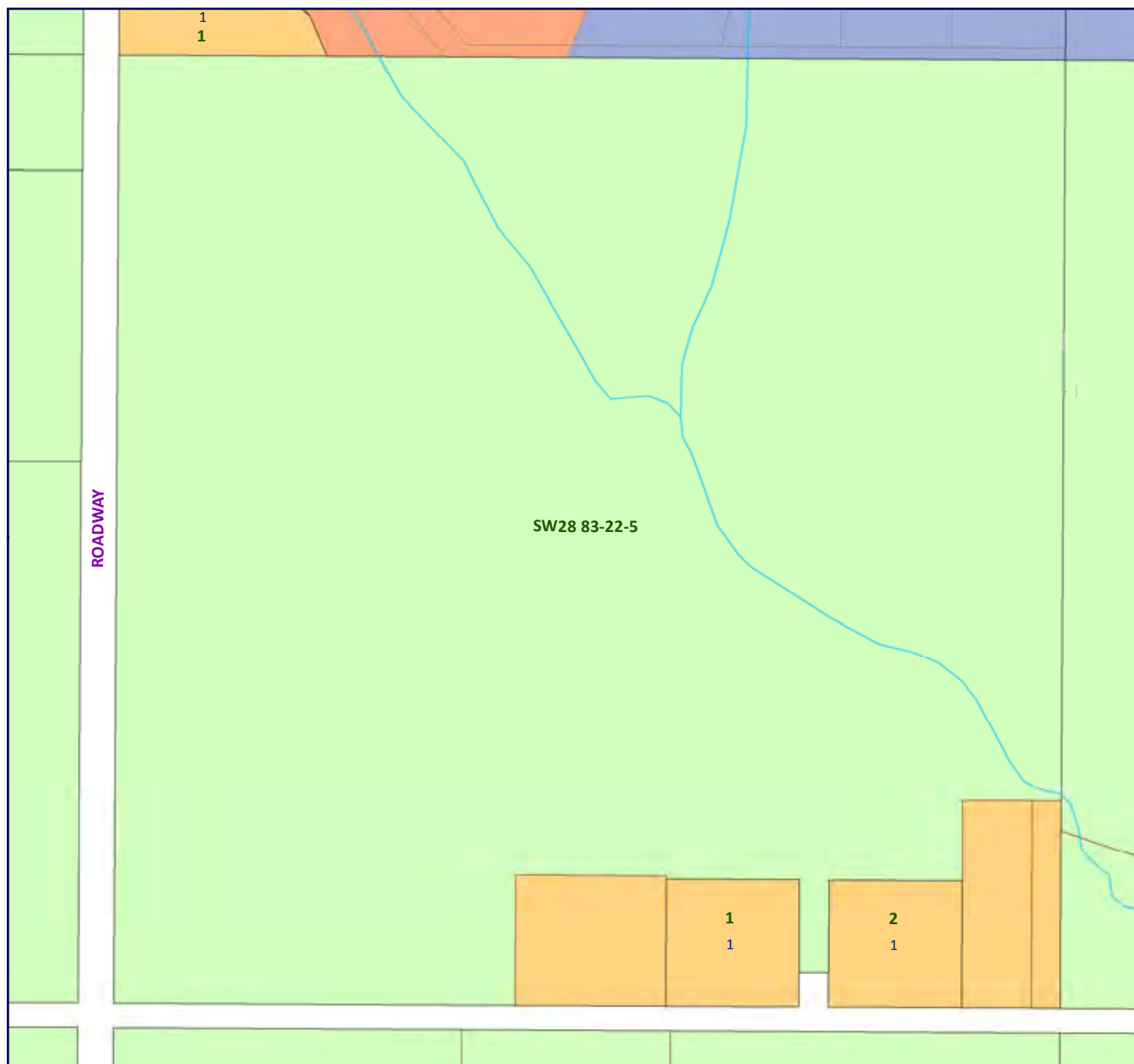
Municipal District of Peace No. 135 Land Use Bylaw No. 1/2012

Land Use Bylaw Detail Map 26



Adopted on: May 8, 2012
Updated and Printed: Oct 2016





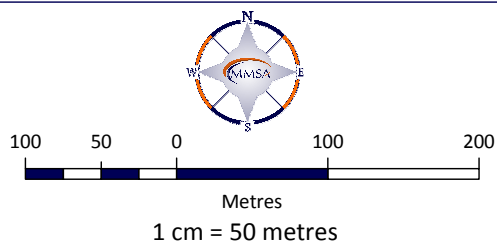
Land Use District

Crown Land (C)	Highway Development (HD)	Hamlet General (HG)
Agricultural (AG)	Rural Industrial (RI)	Direct Control 1 (DC-1)
Joint Plan Agricultural (JPAG)	Rural Industrial: Gravel Pit (RI-GP)	Direct Control 2 (DC-2)
Country Residential (CR)	Rural Industrial: Petroleum Facility (RI-PF)	Highway Commercial (HC)
Country Residential Hobby Farm (CR-2)	Rural Industrial: Shaftesbury Trail Gravel Pit (RI-SG)	Service Commercial (SC)
	Commercial - Industrial (CI)	



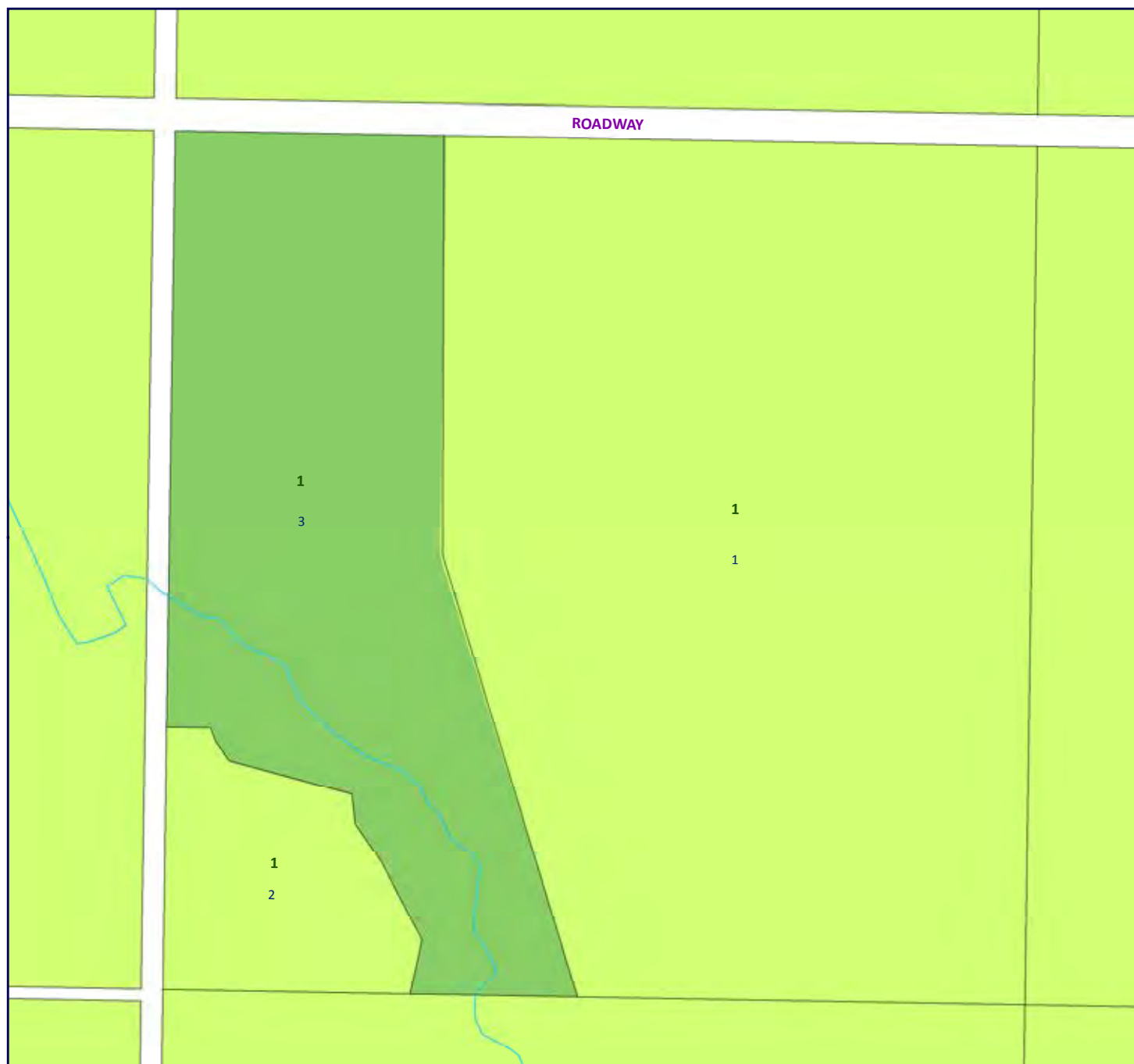
Municipal District of Peace No. 135 Land Use Bylaw No. 1/2012

Land Use Bylaw Detail Map 27



Adopted on: May 8, 2012
Updated and Printed: Oct 2016





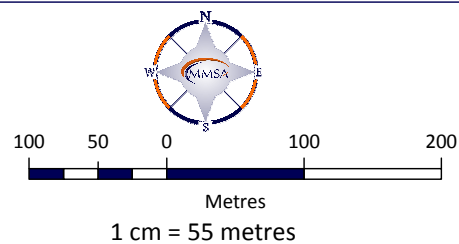
Land Use District

Crown Land (C)	Highway Development (HD)	Hamlet General (HG)
Agricultural (AG)	Rural Industrial (RI)	Direct Control 1 (DC-1)
Joint Plan Agricultural (JPAG)	Rural Industrial: Gravel Pit (RI-GP)	Direct Control 2 (DC-2)
Country Residential (CR)	Rural Industrial: Petroleum Facility (RI-PF)	Highway Commercial (HC)
Country Residential Hobby Farm (CR-2)	Rural Industrial: Shaftesbury Trail Gravel Pit (RI-SG)	Service Commercial (SC)
	Commercial - Industrial (CI)	



Municipal District of Peace No. 135 Land Use Bylaw No. 1/2012

Land Use Bylaw Detail Map 28



Adopted on: May 8, 2012
Updated and Printed: Oct 2016





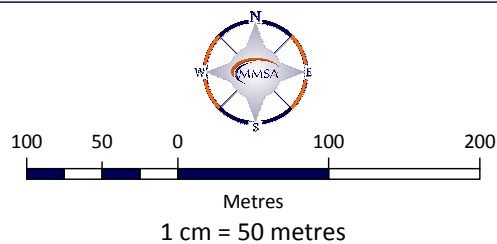
Land Use District

Crown Land (C)	Highway Development (HD)	Hamlet General (HG)
Agricultural (AG)	Rural Industrial (RI)	Direct Control 1 (DC-1)
Joint Plan Agricultural (JPAG)	Rural Industrial: Gravel Pit (RI-GP)	Direct Control 2 (DC-2)
Country Residential (CR)	Rural Industrial: Petroleum Facility (RI-PF)	Highway Commercial (HC)
Country Residential Hobby Farm (CR-2)	Rural Industrial: Shaftesbury Trail Gravel Pit (RI-SG)	Service Commercial (SC)
	Commercial - Industrial (CI)	



Municipal District of Peace No. 135 Land Use Bylaw No. 1/2012

Land Use Bylaw Detail Map 29



Adopted on: May 8, 2012
Updated and Printed: Oct 2016





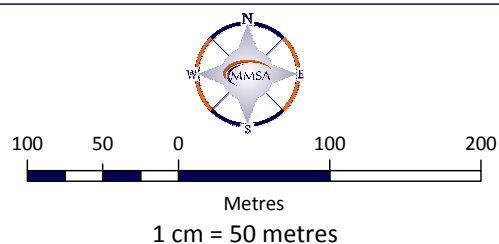
Land Use District

Crown Land (C)	Highway Development (HD)	Hamlet General (HG)
Agricultural (AG)	Rural Industrial (RI)	Direct Control 1 (DC-1)
Joint Plan Agricultural (JPAG)	Rural Industrial: Gravel Pit (RI-GP)	Direct Control 2 (DC-2)
Country Residential (CR)	Rural Industrial: Petroleum Facility (RI-PF)	Highway Commercial (HC)
Country Residential Hobby Farm (CR-2)	Rural Industrial: Shaftesbury Trail Gravel Pit (RI-SG)	Service Commercial (SC)
	Commercial - Industrial (CI)	



**Municipal District of Peace No. 135
Land Use Bylaw No. 1/2012**

Land Use Bylaw Detail Map 30



Adopted on: May 8, 2012
Updated and Printed: Oct 2016

