



Land Use District

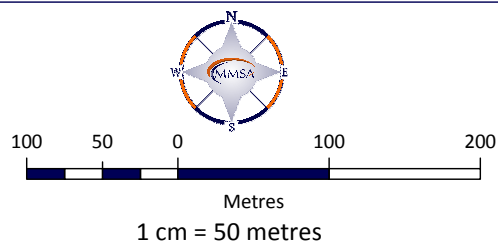
- Crown Land (C)
- Agricultural (AG)
- Joint Plan Agricultural (JPAG)
- Country Residential (CR)
- Country Residential Hobby Farm (CR-2)

- Highway Development (HD)
- Rural Industrial (RI)
- Rural Industrial: Gravel Pit (RI-GP)
- Rural Industrial: Petroleum Facility (RI-PF)
- Rural Industrial: Shaftesbury Trail Gravel Pit (RI-SG)
- Commercial - Industrial (CI)
- Hamlet General (HG)
- Direct Control 1 (DC-1)
- Direct Control 2 (DC-2)
- Highway Commercial (HC)
- Service Commercial (SC)



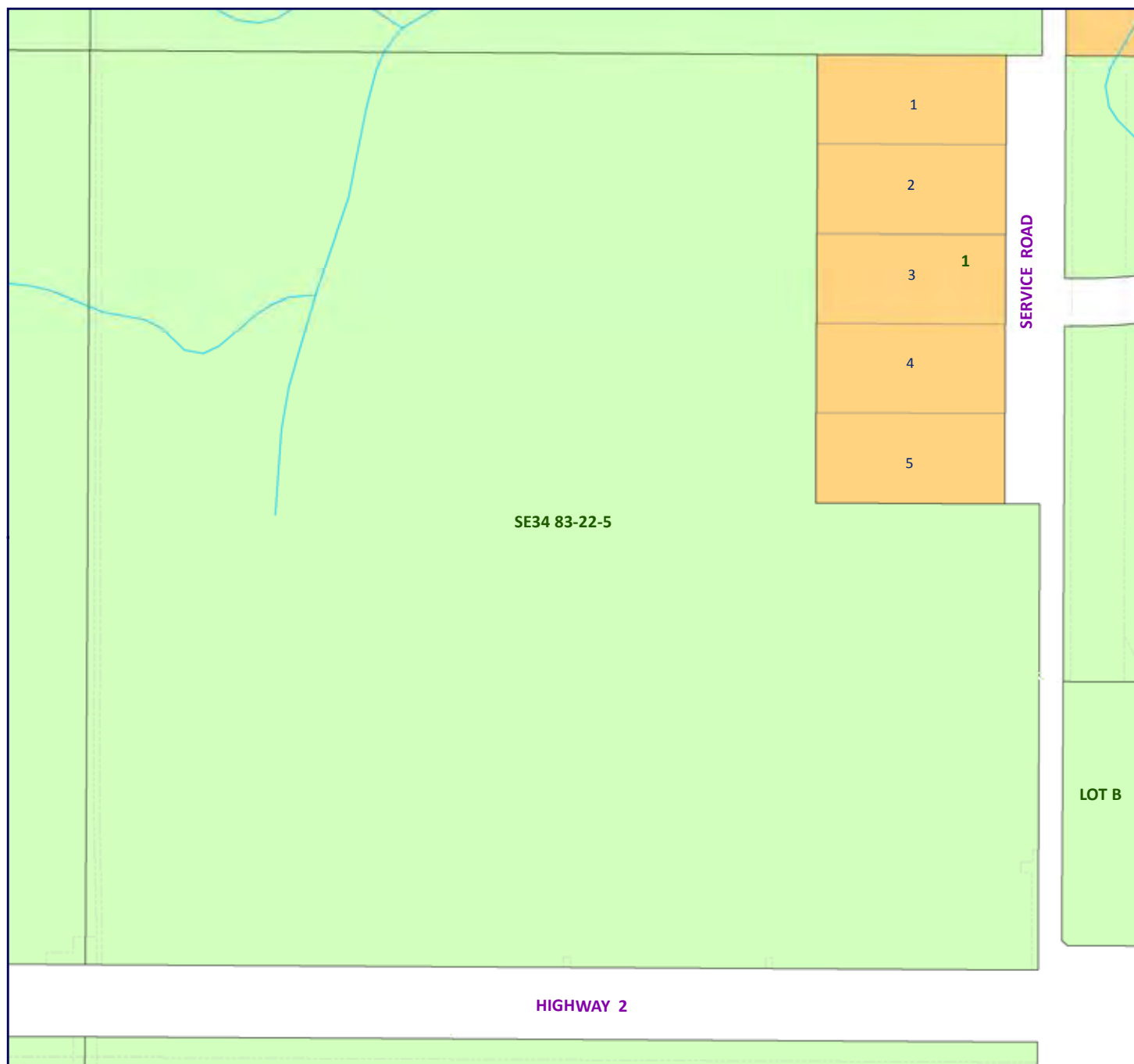
Municipal District of Peace No. 135 Land Use Bylaw No. 1/2012

Land Use Bylaw Detail Map 31



Adopted on: May 8, 2012
Updated and Printed: Oct 2016





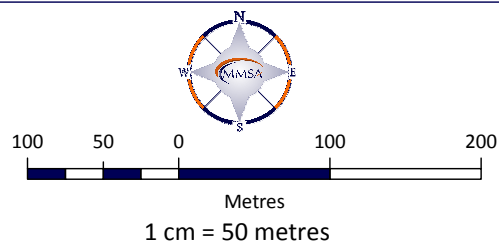
Land Use District

Crown Land (C)	Highway Development (HD)	Hamlet General (HG)
Agricultural (AG)	Rural Industrial (RI)	Direct Control 1 (DC-1)
Joint Plan Agricultural (JPAG)	Rural Industrial: Gravel Pit (RI-GP)	Direct Control 2 (DC-2)
Country Residential (CR)	Rural Industrial: Petroleum Facility (RI-PF)	Highway Commercial (HC)
Country Residential Hobby Farm (CR-2)	Rural Industrial: Shaftesbury Trail Gravel Pit (RI-SG)	Service Commercial (SC)
	Commercial - Industrial (CI)	



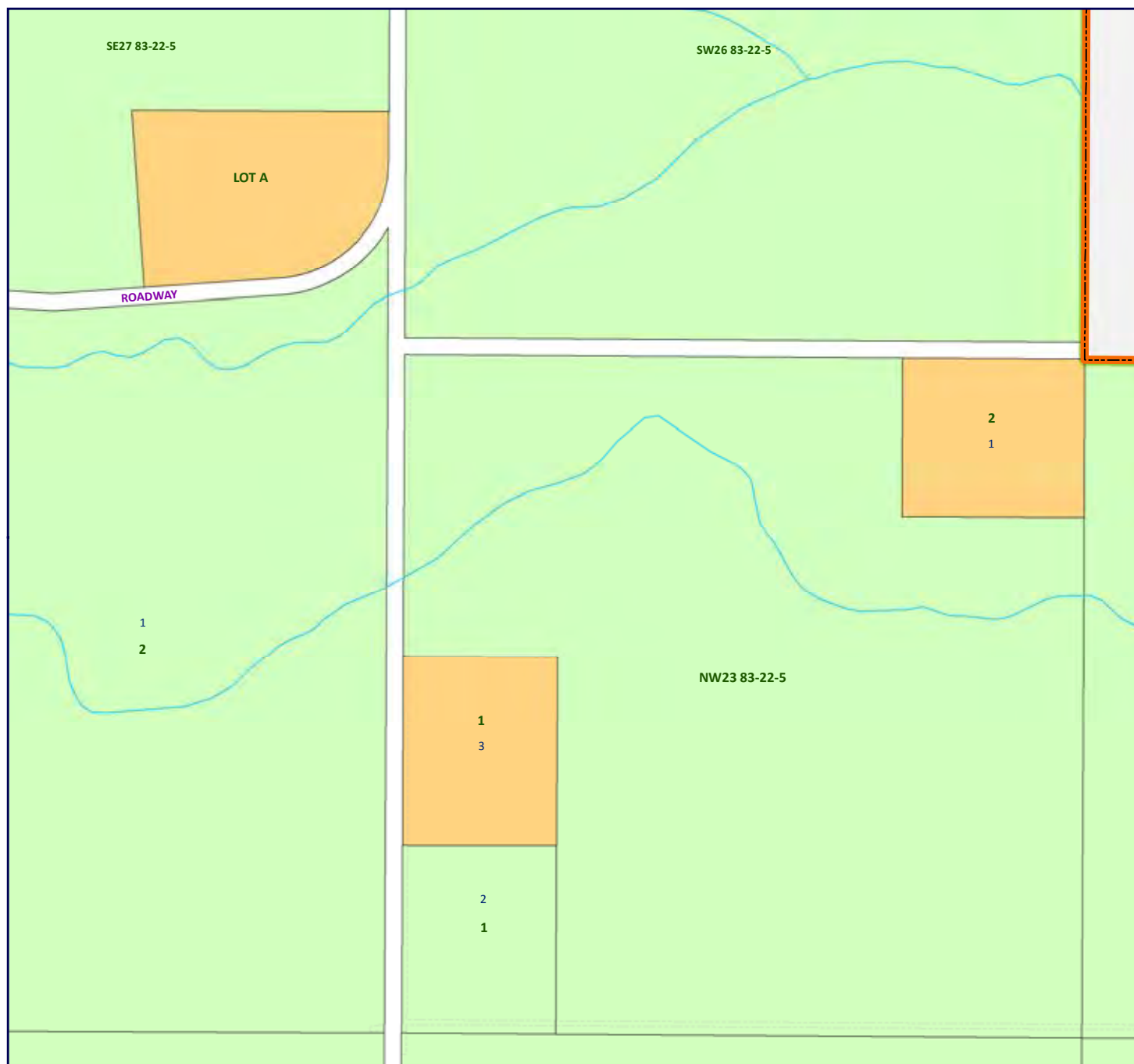
Municipal District of Peace No. 135 Land Use Bylaw No. 1/2012

Land Use Bylaw Detail Map 32



Adopted on: May 8, 2012
Updated and Printed: Oct 2016





Land Use District

Crown Land (C)	Highway Development (HD)	Hamlet General (HG)
Agricultural (AG)	Rural Industrial (RI)	Direct Control 1 (DC-1)
Joint Plan Agricultural (JPAG)	Rural Industrial: Gravel Pit (RI-GP)	Direct Control 2 (DC-2)
Country Residential (CR)	Rural Industrial: Petroleum Facility (RI-PF)	Highway Commercial (HC)
Country Residential Hobby Farm (CR-2)	Rural Industrial: Shaftesbury Trail Gravel Pit (RI-SG)	Service Commercial (SC)
	Commercial - Industrial (CI)	



Municipal District of Peace No. 135 Land Use Bylaw No. 1/2012

Land Use Bylaw Detail Map 33



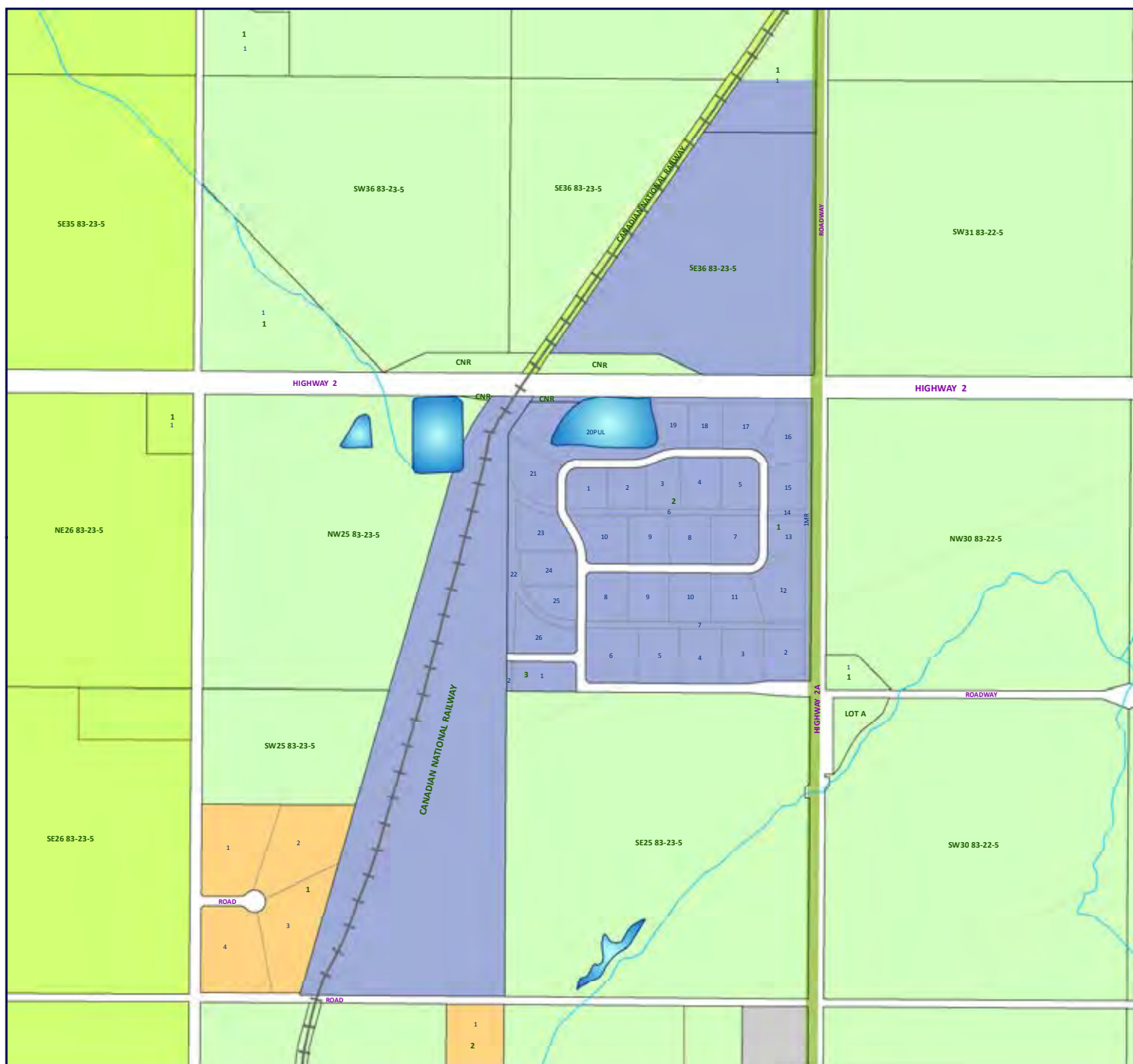
200 100 0 200 400

Metres

1 cm = 70 metres

Adopted on: May 8, 2012
Updated and Printed: Oct 2016





Land Use District

Crown Land (C)	Highway Development (HD)	Hamlet General (HG)
Agricultural (AG)	Rural Industrial (RI)	Direct Control 1 (DC-1)
Joint Plan Agricultural (JPAG)	Rural Industrial: Gravel Pit (RI-GP)	Direct Control 2 (DC-2)
Country Residential (CR)	Rural Industrial: Petroleum Facility (RI-PF)	Highway Commercial (HC)
Country Residential Hobby Farm (CR-2)	Rural Industrial: Shaftesbury Trail Gravel Pit (RI-SG)	Service Commercial (SC)
	Commercial - Industrial (CI)	



Municipal District of Peace No. 135 Land Use Bylaw No. 1/2012

Land Use Bylaw Detail Map 34



400 200 0 400 800

Metres
1 cm = 155 metres

Adopted on: May 8, 2012
Updated and Printed: Oct 2016





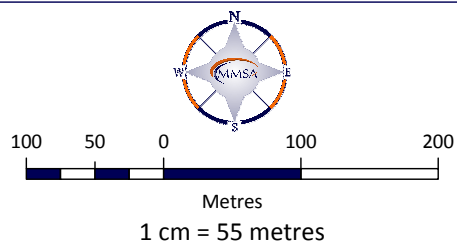
Land Use District

Crown Land (C)	Highway Development (HD)	Hamlet General (HG)
Agricultural (AG)	Rural Industrial (RI)	Direct Control 1 (DC-1)
Joint Plan Agricultural (JPAG)	Rural Industrial: Gravel Pit (RI-GP)	Direct Control 2 (DC-2)
Country Residential (CR)	Rural Industrial: Petroleum Facility (RI-PF)	Highway Commercial (HC)
Country Residential Hobby Farm (CR-2)	Rural Industrial: Shaftesbury Trail Gravel Pit (RI-SG)	Service Commercial (SC)
	Commercial - Industrial (CI)	



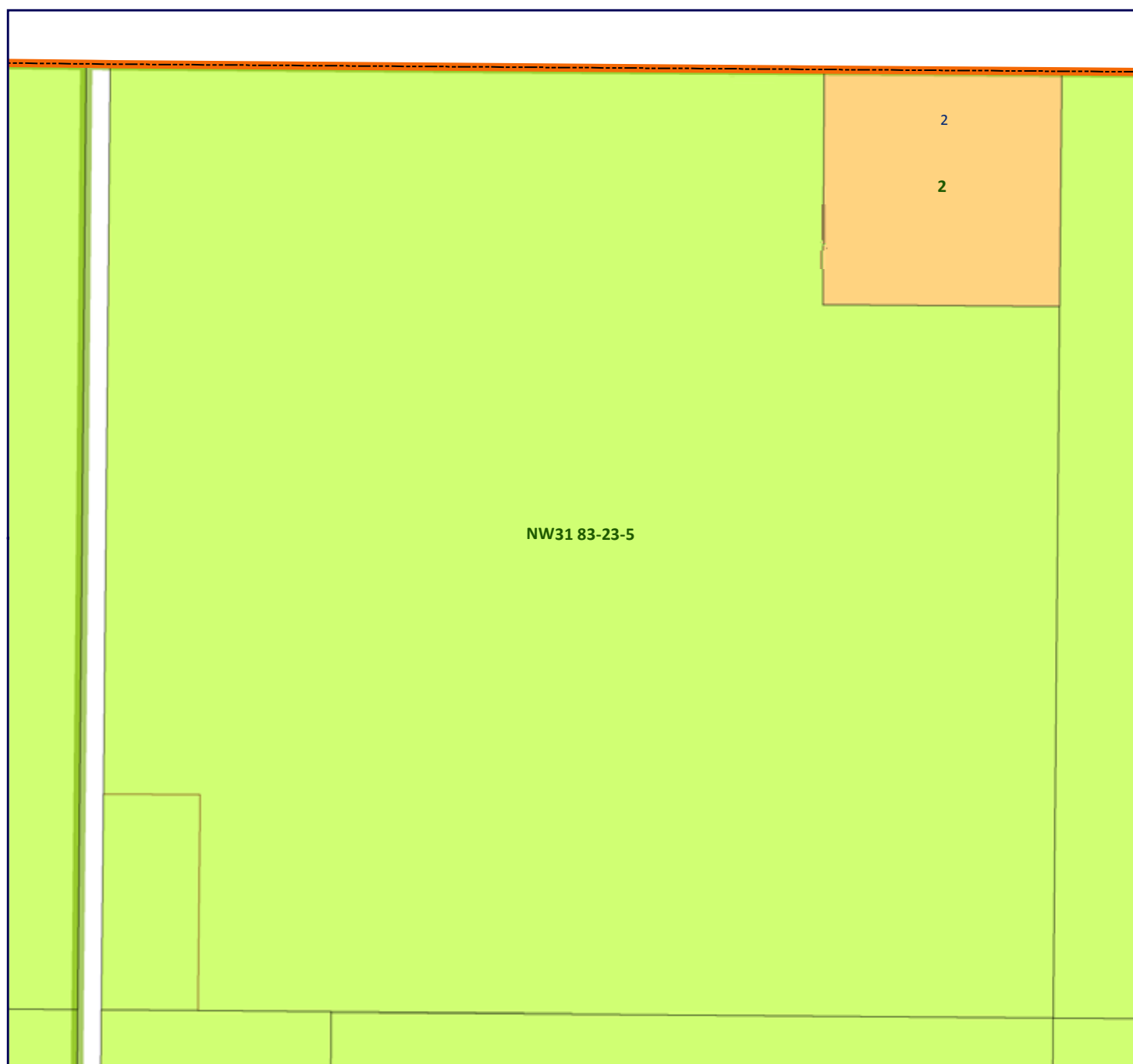
Municipal District of Peace No. 135
Land Use Bylaw No. 1/2012

Land Use Bylaw Detail Map 35


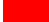

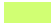


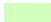











Adopted on: May 8, 2012
 Updated and Printed: Oct 2016





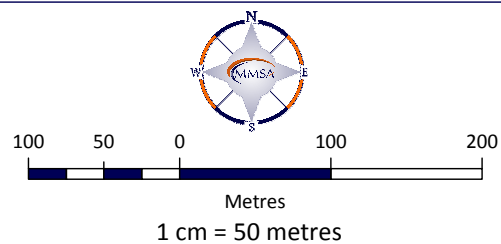
Land Use District

 Crown Land (C)	 Highway Development (HD)	 Hamlet General (HG)
 Agricultural (AG)	 Rural Industrial (RI)	 Direct Control 1 (DC-1)
 Joint Plan Agricultural (JPAG)	 Rural Industrial: Gravel Pit (RI-GP)	 Direct Control 2 (DC-2)
 Country Residential (CR)	 Rural Industrial: Petroleum Facility (RI-PF)	 Highway Commercial (HC)
 Country Residential Hobby Farm (CR-2)	 Rural Industrial: Shaftesbury Trail Gravel Pit (RI-SG)	 Service Commercial (SC)
	 Commercial - Industrial (CI)	



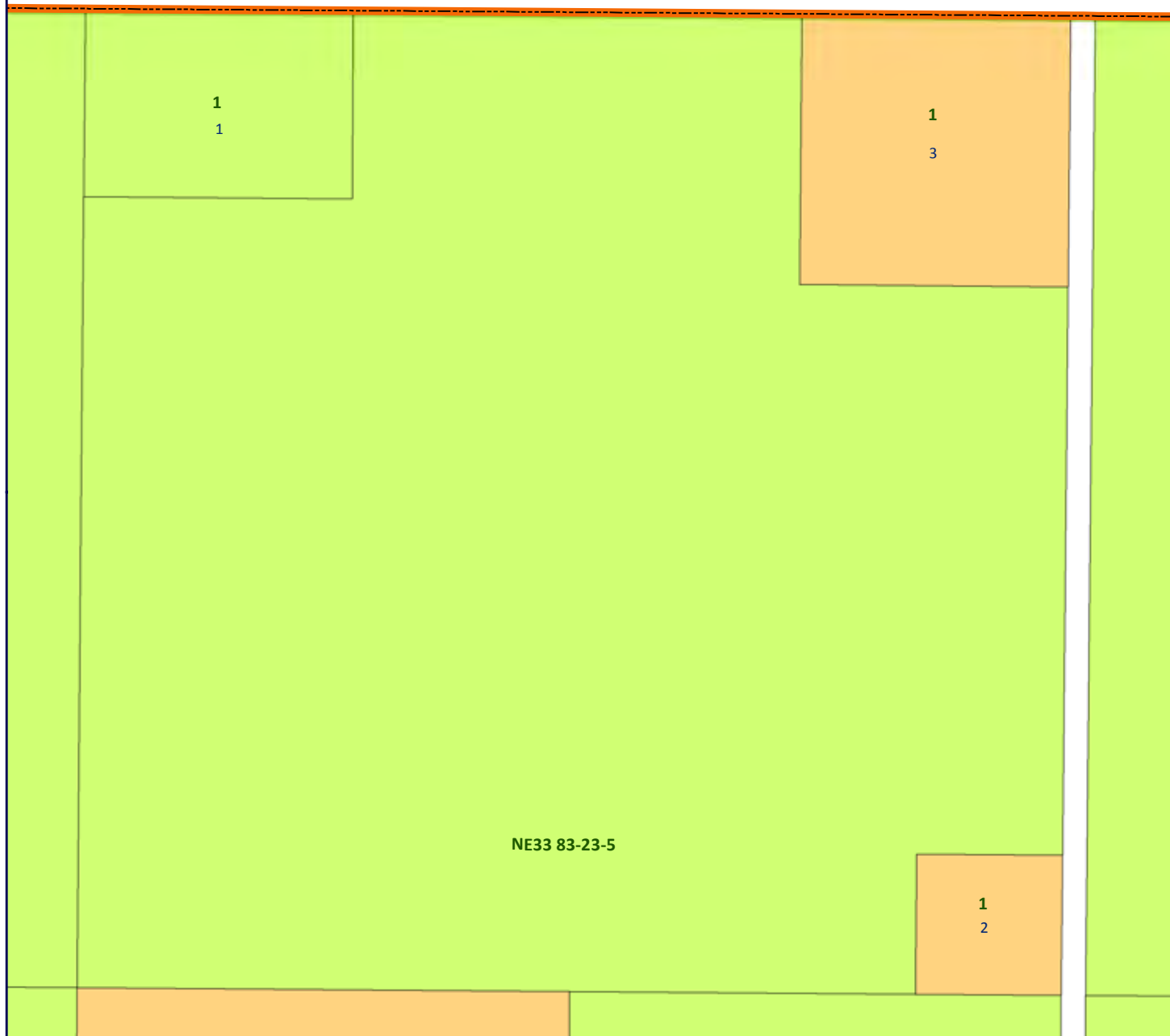
Municipal District of Peace No. 135 Land Use Bylaw No. 1/2012

Land Use Bylaw Detail Map 36



Adopted on: May 8, 2012
Updated and Printed: Oct 2016





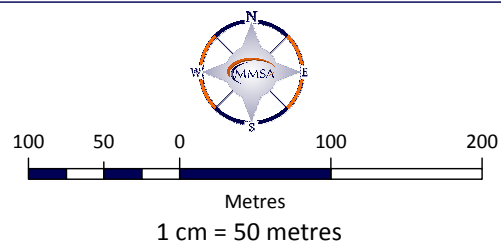
Land Use District

Crown Land (C)	Highway Development (HD)	Hamlet General (HG)
Agricultural (AG)	Rural Industrial (RI)	Direct Control 1 (DC-1)
Joint Plan Agricultural (JPAG)	Rural Industrial: Gravel Pit (RI-GP)	Direct Control 2 (DC-2)
Country Residential (CR)	Rural Industrial: Petroleum Facility (RI-PF)	Highway Commercial (HC)
Country Residential Hobby Farm (CR-2)	Rural Industrial: Shaftesbury Trail Gravel Pit (RI-SG)	Service Commercial (SC)
	Commercial - Industrial (CI)	



Municipal District of Peace No. 135 Land Use Bylaw No. 1/2012

Land Use Bylaw Detail Map 37



Adopted on: May 8, 2012
Updated and Printed: Oct 2016





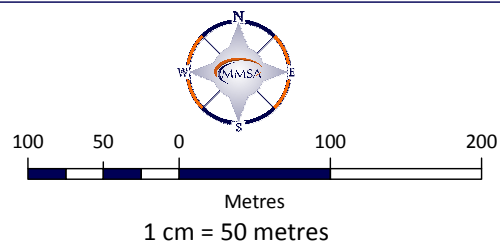
Land Use District

Crown Land (C)	Highway Development (HD)	Hamlet General (HG)
Agricultural (AG)	Rural Industrial (RI)	Direct Control 1 (DC-1)
Joint Plan Agricultural (JPAG)	Rural Industrial: Gravel Pit (RI-GP)	Direct Control 2 (DC-2)
Country Residential (CR)	Rural Industrial: Petroleum Facility (RI-PF)	Highway Commercial (HC)
Country Residential Hobby Farm (CR-2)	Rural Industrial: Shaftesbury Trail Gravel Pit (RI-SG)	Service Commercial (SC)
	Commercial - Industrial (CI)	



Municipal District of Peace No. 135 Land Use Bylaw No. 1/2012

Land Use Bylaw Detail Map 38



Adopted on: May 8, 2012
Updated and Printed: Oct 2016





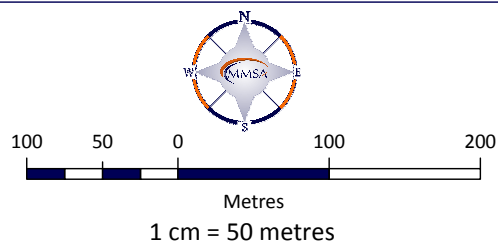
Land Use District

Crown Land (C)	Highway Development (HD)	Hamlet General (HG)
Agricultural (AG)	Rural Industrial (RI)	Direct Control 1 (DC-1)
Joint Plan Agricultural (JPAG)	Rural Industrial: Gravel Pit (RI-GP)	Direct Control 2 (DC-2)
Country Residential (CR)	Rural Industrial: Petroleum Facility (RI-PF)	Highway Commercial (HC)
Country Residential Hobby Farm (CR-2)	Rural Industrial: Shaftesbury Trail Gravel Pit (RI-SG)	Service Commercial (SC)
	Commercial - Industrial (CI)	



Municipal District of Peace No. 135 Land Use Bylaw No. 1/2012

Land Use Bylaw Detail Map 39




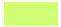

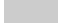
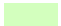








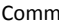


Adopted on: May 8, 2012
Updated and Printed: Oct 2016





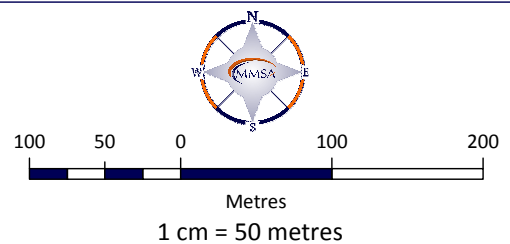
Land Use District

 Crown Land (C)	 Highway Development (HD)	 Hamlet General (HG)
 Agricultural (AG)	 Rural Industrial (RI)	 Direct Control 1 (DC-1)
 Joint Plan Agricultural (JPAG)	 Rural Industrial: Gravel Pit (RI-GP)	 Direct Control 2 (DC-2)
 Country Residential (CR)	 Rural Industrial: Petroleum Facility (RI-PF)	 Highway Commercial (HC)
 Country Residential Hobby Farm (CR-2)	 Rural Industrial: Shaftesbury Trail Gravel Pit (RI-SG)	 Service Commercial (SC)
	 Commercial - Industrial (CI)	



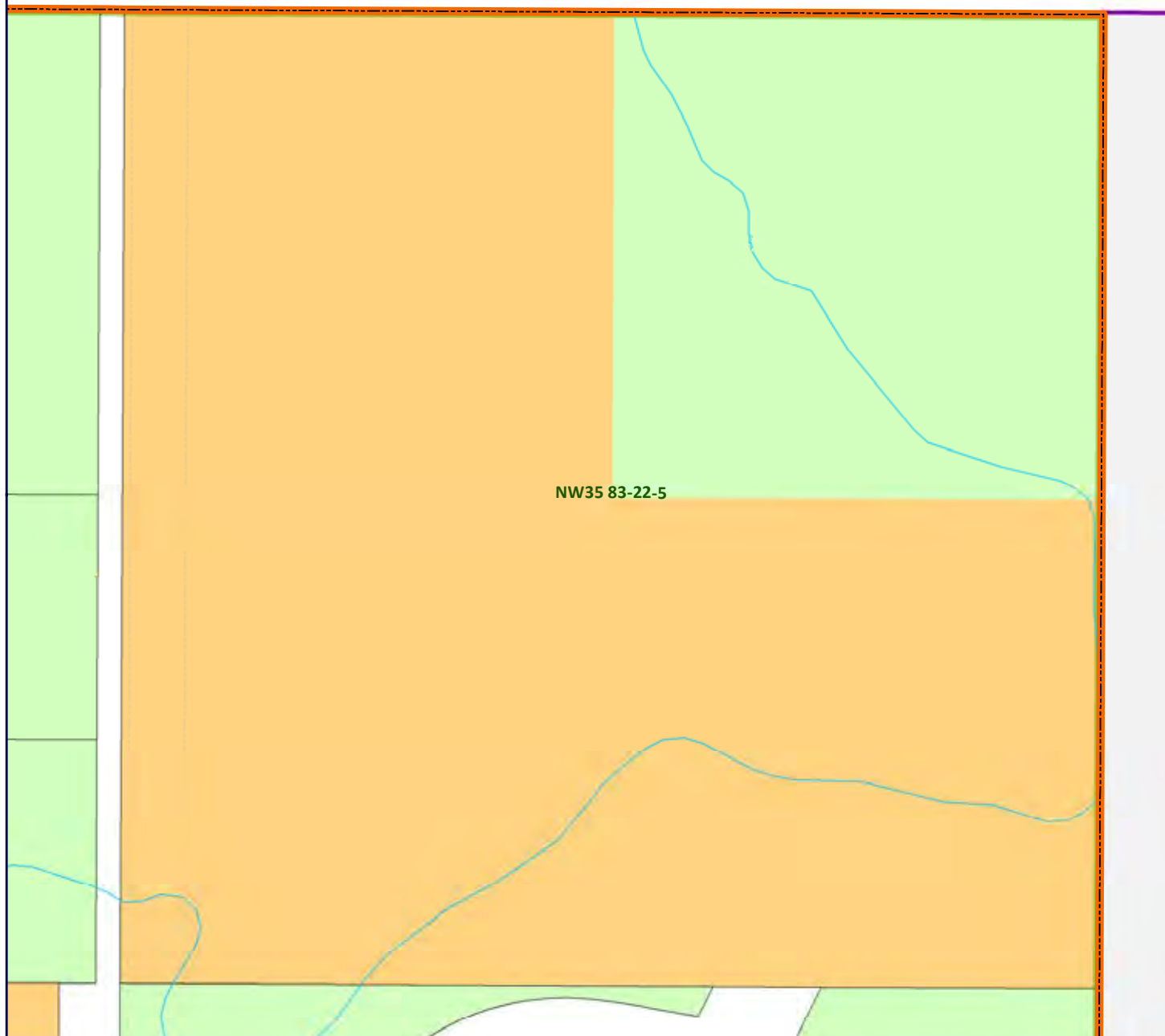
Municipal District of Peace No. 135 Land Use Bylaw No. 1/2012

Land Use Bylaw Detail Map 40



Adopted on: May 8, 2012
Updated and Printed: Oct 2016





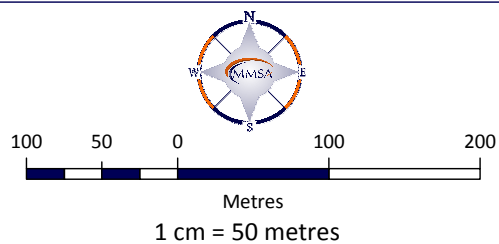
Land Use District

Crown Land (C)	Highway Development (HD)	Hamlet General (HG)
Agricultural (AG)	Rural Industrial (RI)	Direct Control 1 (DC-1)
Joint Plan Agricultural (JPAG)	Rural Industrial: Gravel Pit (RI-GP)	Direct Control 2 (DC-2)
Country Residential (CR)	Rural Industrial: Petroleum Facility (RI-PF)	Highway Commercial (HC)
Country Residential Hobby Farm (CR-2)	Rural Industrial: Shaftesbury Trail Gravel Pit (RI-SG)	Service Commercial (SC)
	Commercial - Industrial (CI)	



Municipal District of Peace No. 135 Land Use Bylaw No. 1/2012

Land Use Bylaw Detail Map 41


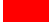

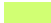


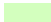











Adopted on: May 8, 2012
Updated and Printed: Oct 2016





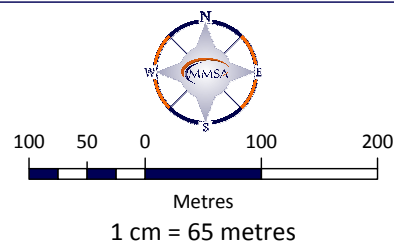
Land Use District

 Crown Land (C)	 Highway Development (HD)	 Hamlet General (HG)
 Agricultural (AG)	 Rural Industrial (RI)	 Direct Control 1 (DC-1)
 Joint Plan Agricultural (JPAG)	 Rural Industrial: Gravel Pit (RI-GP)	 Direct Control 2 (DC-2)
 Country Residential (CR)	 Rural Industrial: Petroleum Facility (RI-PF)	 Highway Commercial (HC)
 Country Residential Hobby Farm (CR-2)	 Rural Industrial: Shaftesbury Trail Gravel Pit (RI-SG)	 Service Commercial (SC)
	 Commercial - Industrial (CI)	



Municipal District of Peace No. 135 Land Use Bylaw No. 1/2012

Land Use Bylaw Detail Map 42



Adopted on: May 8, 2012
Updated and Printed: Oct 2016



HIGHWAY 2

HIGHWAY 2
















NW29 83-23-5

1

1

2

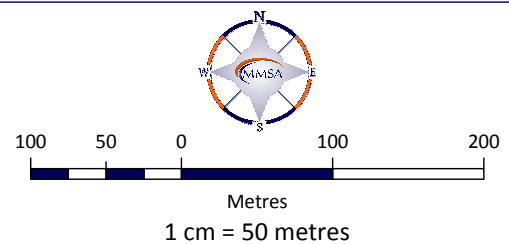
Land Use District

 Crown Land (C)	 Highway Development (HD)	 Hamlet General (HG)
 Agricultural (AG)	 Rural Industrial (RI)	 Direct Control 1 (DC-1)
 Joint Plan Agricultural (JPAG)	 Rural Industrial: Gravel Pit (RI-GP)	 Direct Control 2 (DC-2)
 Country Residential (CR)	 Rural Industrial: Petroleum Facility (RI-PF)	 Highway Commercial (HC)
 Country Residential Hobby Farm (CR-2)	 Rural Industrial: Shaftesbury Trail Gravel Pit (RI-SG)	 Service Commercial (SC)
	 Commercial - Industrial (CI)	



Municipal District of Peace No. 135
Land Use Bylaw No. 1/2012

Land Use Bylaw Detail Map 43





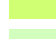
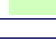





Adopted on: May 8, 2012
 Updated and Printed: Oct 2016











Land Use District

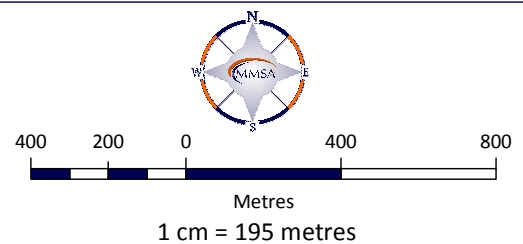
-  Airport Clear Area
-  Airport Industrial District
-  Airport Rural District
-  Crown Land (C)
-  Agricultural (AG)
-  Joint Plan Agricultural (JPAG)

-  Country Residential (CR)
-  Country Residential Hobby Farm (CR-2)
-  Highway Development (HD)
-  Rural Industrial (RI)
-  Rural Industrial: Gravel Pit (RI-GP)
-  Rural Industrial: Petroleum Facility (RI-PF)
-  Rural Industrial: Shaftesbury Trail Gravel Pit (RI-SG)

-  Commercial - Industrial (CI)
-  Hamlet General (HG)
-  Direct Control 1 (DC-1)
-  Direct Control 2 (DC-2)
-  Highway Commercial (HC)
-  Service Commercial (SC)

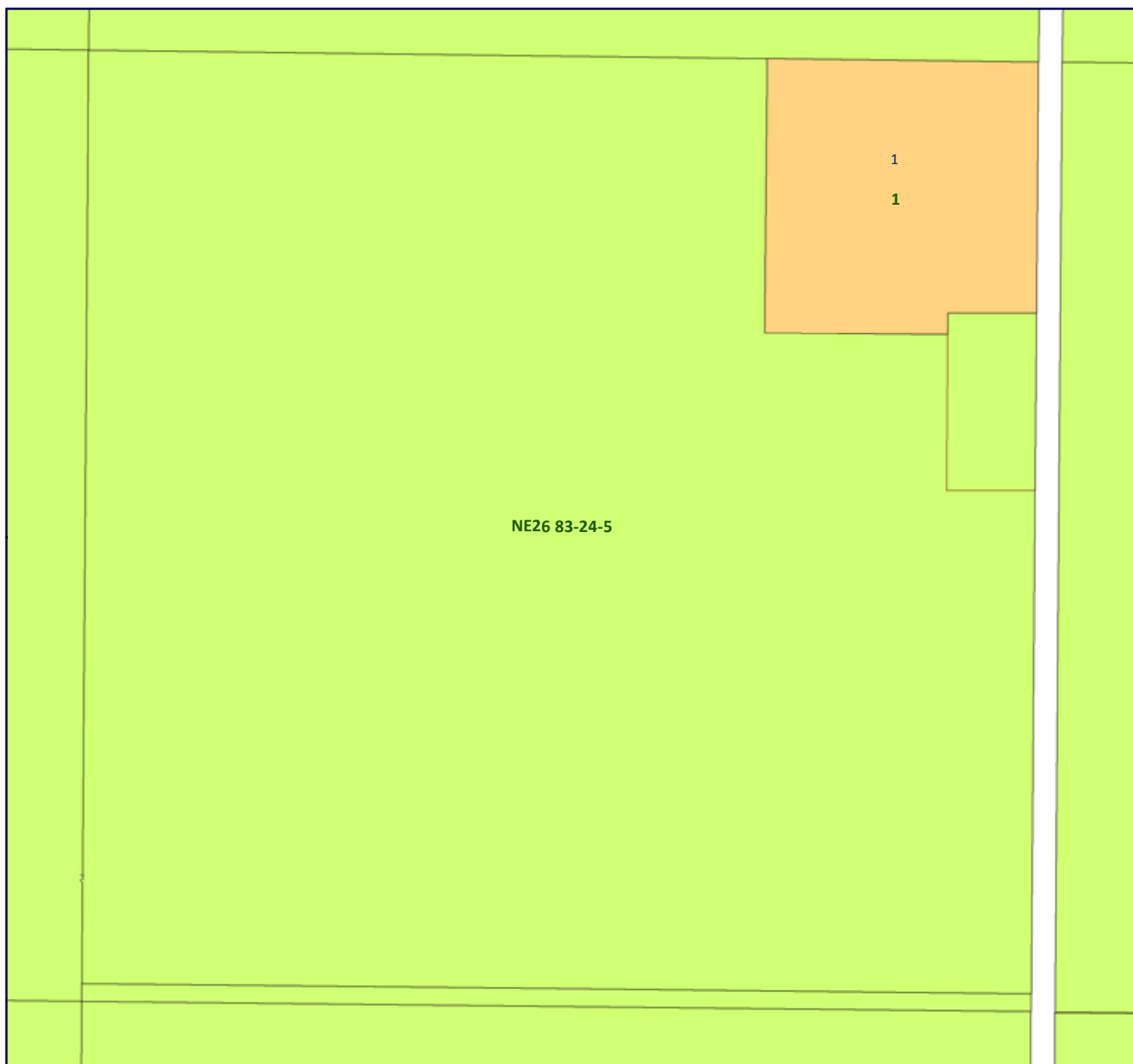


Municipal District of Peace No. 135
Land Use Bylaw No. 1/2012
 Land Use Bylaw Detail Map 44
 Airport Vicinity Protection Area







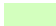








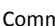


Adopted on: May 8, 2012
 Updated and Printed: Oct 2016





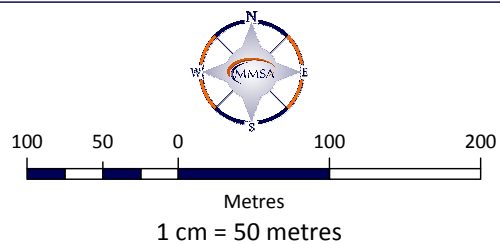
Land Use District

 Crown Land (C)	 Highway Development (HD)	 Hamlet General (HG)
 Agricultural (AG)	 Rural Industrial (RI)	 Direct Control 1 (DC-1)
 Joint Plan Agricultural (JPAG)	 Rural Industrial: Gravel Pit (RI-GP)	 Direct Control 2 (DC-2)
 Country Residential (CR)	 Rural Industrial: Petroleum Facility (RI-PF)	 Highway Commercial (HC)
 Country Residential Hobby Farm (CR-2)	 Rural Industrial: Shaftesbury Trail Gravel Pit (RI-SG)	 Service Commercial (SC)
	 Commercial - Industrial (CI)	



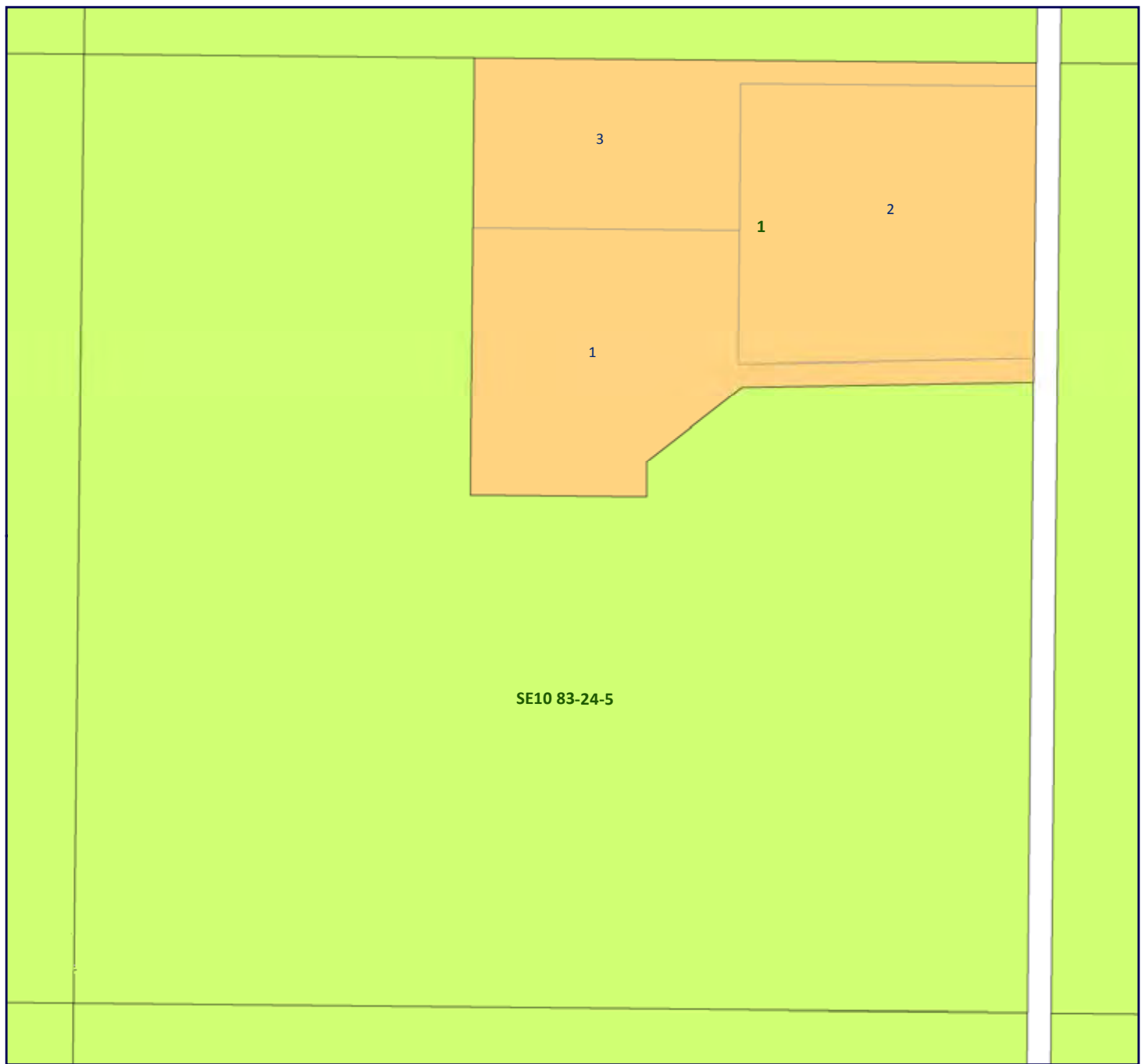
Municipal District of Peace No. 135 Land Use Bylaw No. 1/2012

Land Use Bylaw Detail Map 45



Adopted on: May 8, 2012
Updated and Printed: Oct 2016





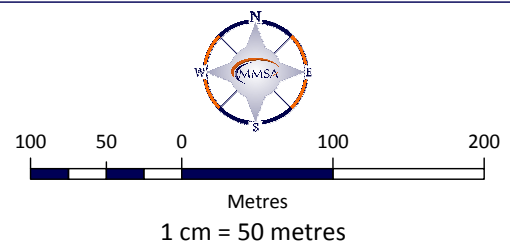
Land Use District

Crown Land (C)	Highway Development (HD)	Hamlet General (HG)
Agricultural (AG)	Rural Industrial (RI)	Direct Control 1 (DC-1)
Joint Plan Agricultural (JPAG)	Rural Industrial: Gravel Pit (RI-GP)	Direct Control 2 (DC-2)
Country Residential (CR)	Rural Industrial: Petroleum Facility (RI-PF)	Highway Commercial (HC)
Country Residential Hobby Farm (CR-2)	Rural Industrial: Shaftesbury Trail Gravel Pit (RI-SG)	Service Commercial (SC)
	Commercial - Industrial (CI)	



Municipal District of Peace No. 135 Land Use Bylaw No. 1/2012

Land Use Bylaw Detail Map 46



Adopted on: May 8, 2012
Updated and Printed: Oct 2016





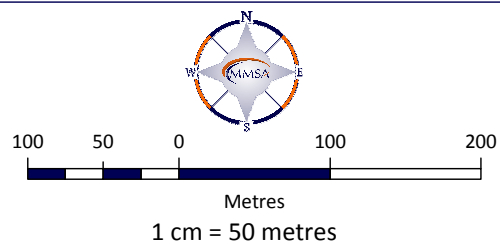
Land Use District

Crown Land (C)	Highway Development (HD)	Hamlet General (HG)
Agricultural (AG)	Rural Industrial (RI)	Direct Control 1 (DC-1)
Joint Plan Agricultural (JPAG)	Rural Industrial: Gravel Pit (RI-GP)	Direct Control 2 (DC-2)
Country Residential (CR)	Rural Industrial: Petroleum Facility (RI-PF)	Highway Commercial (HC)
Country Residential Hobby Farm (CR-2)	Rural Industrial: Shaftesbury Trail Gravel Pit (RI-SG)	Service Commercial (SC)
	Commercial - Industrial (CI)	



Municipal District of Peace No. 135 Land Use Bylaw No. 1/2012

Land Use Bylaw Detail Map 47



Adopted on: May 8, 2012
Updated and Printed: Oct 2016





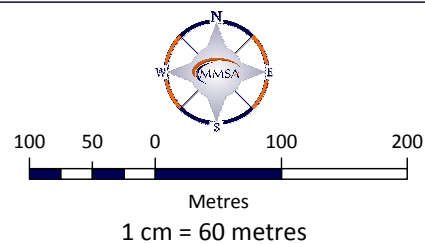
Land Use District

Crown Land (C)	Highway Development (HD)	Hamlet General (HG)
Agricultural (AG)	Rural Industrial (RI)	Direct Control 1 (DC-1)
Joint Plan Agricultural (JPAG)	Rural Industrial: Gravel Pit (RI-GP)	Direct Control 2 (DC-2)
Country Residential (CR)	Rural Industrial: Petroleum Facility (RI-PF)	Highway Commercial (HC)
Country Residential Hobby Farm (CR-2)	Rural Industrial: Shaftesbury Trail Gravel Pit (RI-SG)	Service Commercial (SC)
	Commercial - Industrial (CI)	



Municipal District of Peace No. 135 Land Use Bylaw No. 1/2012

Land Use Bylaw Detail Map 48



Adopted on: May 8, 2012
Updated and Printed: Oct 2016





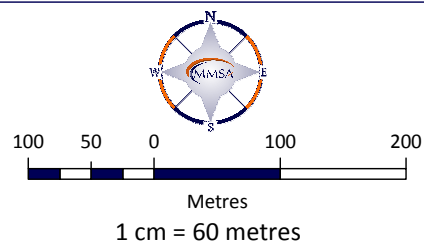
Land Use District

Crown Land (C)	Highway Development (HD)	Hamlet General (HG)
Agricultural (AG)	Rural Industrial (RI)	Direct Control 1 (DC-1)
Joint Plan Agricultural (JPAG)	Rural Industrial: Gravel Pit (RI-GP)	Direct Control 2 (DC-2)
Country Residential (CR)	Rural Industrial: Petroleum Facility (RI-PF)	Highway Commercial (HC)
Country Residential Hobby Farm (CR-2)	Rural Industrial: Shaftesbury Trail Gravel Pit (RI-SG)	Service Commercial (SC)
	Commercial - Industrial (CI)	



Municipal District of Peace No. 135 Land Use Bylaw No. 1/2012

Land Use Bylaw Detail Map 49



Adopted on: May 8, 2012
Updated and Printed: Oct 2016





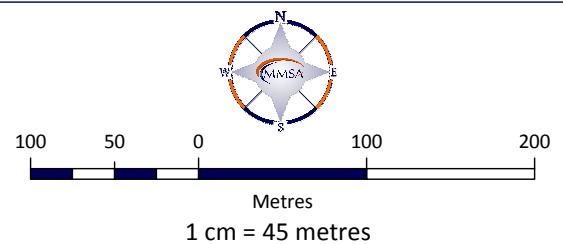
Land Use District

Crown Land (C)	Highway Development (HD)	Hamlet General (HG)
Agricultural (AG)	Rural Industrial (RI)	Direct Control 1 (DC-1)
Joint Plan Agricultural (JPAG)	Rural Industrial: Gravel Pit (RI-GP)	Direct Control 2 (DC-2)
Country Residential (CR)	Rural Industrial: Petroleum Facility (RI-PF)	Highway Commercial (HC)
Country Residential Hobby Farm (CR-2)	Rural Industrial: Shaftesbury Trail Gravel Pit (RI-SG)	Service Commercial (SC)
	Commercial - Industrial (CI)	



Municipal District of Peace No. 135 Land Use Bylaw No. 1/2012

Land Use Bylaw Detail Map 50



Adopted on: May 8, 2012
Updated and Printed: Oct 2016





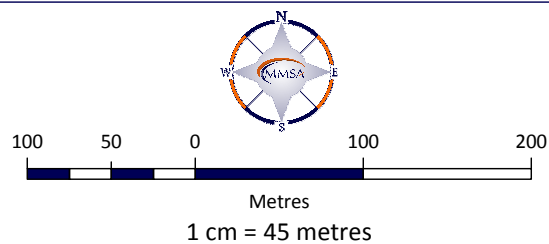
Land Use District

Crown Land (C)	Highway Development (HD)	Hamlet General (HG)
Agricultural (AG)	Rural Industrial (RI)	Direct Control 1 (DC-1)
Joint Plan Agricultural (JPAG)	Rural Industrial: Gravel Pit (RI-GP)	Direct Control 2 (DC-2)
Country Residential (CR)	Rural Industrial: Petroleum Facility (RI-PF)	Highway Commercial (HC)
Country Residential Hobby Farm (CR-2)	Rural Industrial: Shaftesbury Trail Gravel Pit (RI-SG)	Service Commercial (SC)
	Commercial - Industrial (CI)	



Municipal District of Peace No. 135 Land Use Bylaw No. 1/2012

Land Use Bylaw Detail Map 51



Adopted on: May 8, 2012
Updated and Printed: Oct 2016





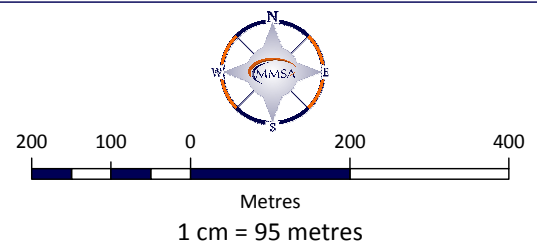
Land Use District

Crown Land (C)	Highway Development (HD)	Hamlet General (HG)
Agricultural (AG)	Rural Industrial (RI)	Direct Control 1 (DC-1)
Joint Plan Agricultural (JPAG)	Rural Industrial: Gravel Pit (RI-GP)	Direct Control 2 (DC-2)
Country Residential (CR)	Rural Industrial: Petroleum Facility (RI-PF)	Highway Commercial (HC)
Country Residential Hobby Farm (CR-2)	Rural Industrial: Shaftesbury Trail Gravel Pit (RI-SG)	Service Commercial (SC)
	Commercial - Industrial (CI)	



Municipal District of Peace No. 135 Land Use Bylaw No. 1/2012

Land Use Bylaw Detail Map 52



Adopted on: May 8, 2012
Updated and Printed: Oct 2016





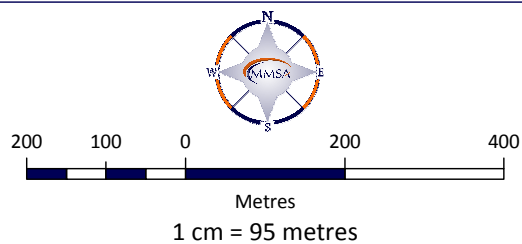
Land Use District

Crown Land (C)	Highway Development (HD)	Hamlet General (HG)
Agricultural (AG)	Rural Industrial (RI)	Direct Control 1 (DC-1)
Joint Plan Agricultural (JPAG)	Rural Industrial: Gravel Pit (RI-GP)	Direct Control 2 (DC-2)
Country Residential (CR)	Rural Industrial: Petroleum Facility (RI-PF)	Highway Commercial (HC)
Country Residential Hobby Farm (CR-2)	Rural Industrial: Shaftesbury Trail Gravel Pit (RI-SG)	Service Commercial (SC)
	Commercial - Industrial (CI)	



Municipal District of Peace No. 135 Land Use Bylaw No. 1/2012

Land Use Bylaw Detail Map 53



Adopted on: May 8, 2012
Updated and Printed: Oct 2016





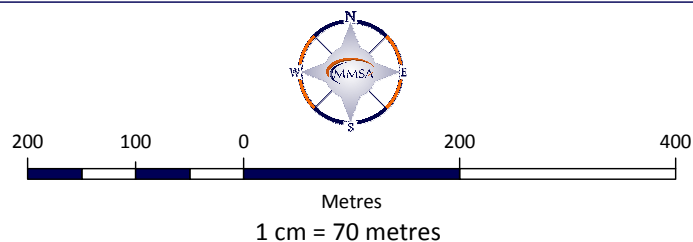
Land Use District

Crown Land (C)	Highway Development (HD)	Hamlet General (HG)
Agricultural (AG)	Rural Industrial (RI)	Direct Control 1 (DC-1)
Joint Plan Agricultural (JPAG)	Rural Industrial: Gravel Pit (RI-GP)	Direct Control 2 (DC-2)
Country Residential (CR)	Rural Industrial: Petroleum Facility (RI-PF)	Highway Commercial (HC)
Country Residential Hobby Farm (CR-2)	Rural Industrial: Shaftesbury Trail Gravel Pit (RI-SG)	Service Commercial (SC)
	Commercial - Industrial (CI)	



Municipal District of Peace No. 135 Land Use Bylaw No. 1/2012

Land Use Bylaw Detail Map 54



Adopted on: May 8, 2012
Updated and Printed: Oct 2016



