

BYLAW NO. 5/2018

BEING A BYLAW OF THE
MUNICIPAL DISTRICT OF PEACE NO. 135
IN THE PROVINCE OF ALBERTA

TO AMEND THE
MUNICIPAL DISTRICT OF PEACE NO. 135 LAND USE BYLAW NO. 1/2012

WHEREAS, The Municipal District of Peace No. 135 has adopted the Municipal District of Peace No. 135 Land Use Bylaw No. 1/2012 as amended, to regulate land use and development in the Municipal District, and

WHEREAS, the Council of Municipal District of Peace No. 135, in the Province of Alberta, has deemed it desirable to amend the Municipal District of Peace No. 135 Land Use Bylaw.

NOW THEREFORE, PURSUANT TO SECTION 230, 606 and 692 OF THE MUNICIPAL GOVERNMENT ACT, RSA 2000 Chapter M-26, THE COUNCIL OF MUNICIPAL DISTRICT OF PEACE NO. 135, IN THE PROVINCE OF ALBERTA, DULY ASSEMBLED, HEREBY ENACTS AS FOLLOWS:

1. That Part of the SW26-83-22-W5M be re-designated from Joint Plan Agricultural District (JPAG) to Country Residential District (CR) as per Schedule "A" attached.
2. That the adoption of this bylaw is effective upon the date of the passing of the third and final reading of this bylaw.

First reading given on the 13th day of March, 2018.




Robert Willing, Reeve




Barbara Johnson, Chief Administrative Officer

Second reading given on the 10 day of April, 2018.




Robert Willing, Reeve




Barbara Johnson, Chief Administrative Officer

Third reading given on the 10 day of April, 2018.



Robert Willing, Reeve

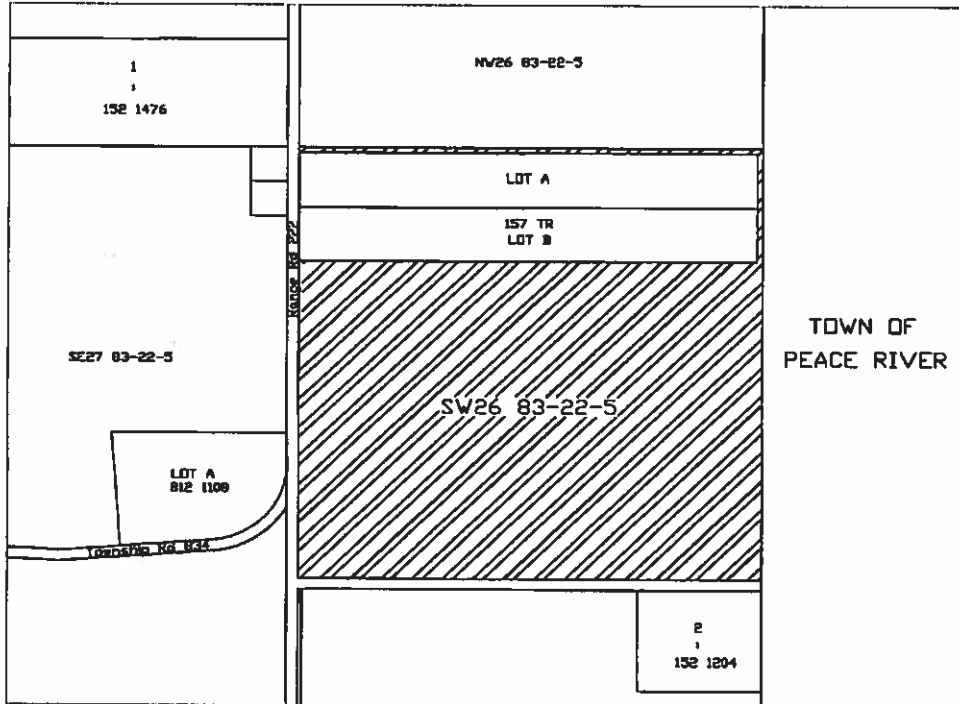


Barbara Johnson, Chief Administrative Officer

SCHEDULE "A"

Bylaw No. 5/2018

1. That Part of the SW26-83-22-W5M be re-designated from Joint Plan Agricultural District (JPAG) to Country Residential District (CR), as shown below.



 Joint Plan Agricultural District (JPAG) to Country Residential District (CR)

Robert Willing, Reeve

Barbara Johnson, Chief Administrative Officer

EFFECTIVE THIS 10 DAY OF April, 2018.